

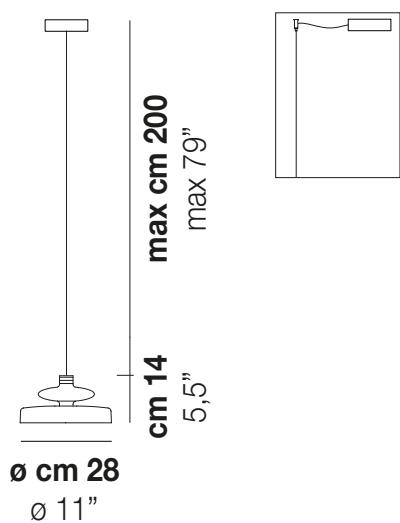
TREAD

Design Chiaramonte & Marin

TREAD SP 28



TREAD SP 28



DATOS TÉCNICOS:



CERTIFICATIONS:



| | | | |
|----------------|-------|-----------------------|---|
| LED 2700K DIM2 | 1x12W | 220-240 V 50/60 Hz | Led 2700 K 12 W 35 V 1500 lm DIM2 Phase Cut |
| LED 2700K DIM3 | 1x12W | 220-240 V 50/60 Hz | Led 2700 K 12 W 35 V 1500 lm DIM3 0-10V, Push |
| LED 3000K DIM2 | 1x12W | 220-240 V 50/60 Hz | Led 3000 K 12 W 35 V 1600 lm DIM2 Phase Cut |
| LED 3000K DIM3 | 1x12W | 220-240 V 50/60 Hz | Led 3000 K 12 W 35 V 1600 lm DIM3 0-10V, Push |

| | |
|------------|---------|
| VOLUME | Mc 0,05 |
| PESO BRUTO | Kg 4 |
| PESO NETO | Kg 2,7 |

download



ACABADO DEL DIFUSOR



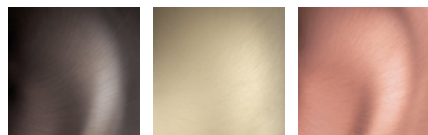
CR

FU

TB

VA

ACABADO PARTES METÁLICAS



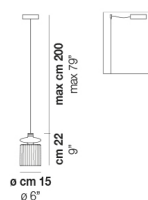
BHS

BKS

RAS

OTRAS VERSIONES DISPONIBLES

Haga clic en la versión para ir a la versión web del producto



TREAD SP