

Consumer information :

- Lamp designed for general use outside.
- Protection for people and animals against electric shocks is ensured by a single electric insulation and by the earth conductor after it has been suitably connected.
- The safety of this light is guaranteed with a bulb, the power of which must not exceed that visibly indicated on the light.
- The minimum connection wire must be SVT 18AWG.

**READ AND UNDERSTAND THESE INSTRUCTIONS BEFORE INSTALLING FIXTURE**

This fixture is intended for installation in accordance with the National Electrical Code and local regulations. To assure full compliance with local codes and regulations, check with your local electrical inspector before installation. To prevent electrical shock, turn off electricity at fuse box before proceeding. Retain these instructions for maintenance reference

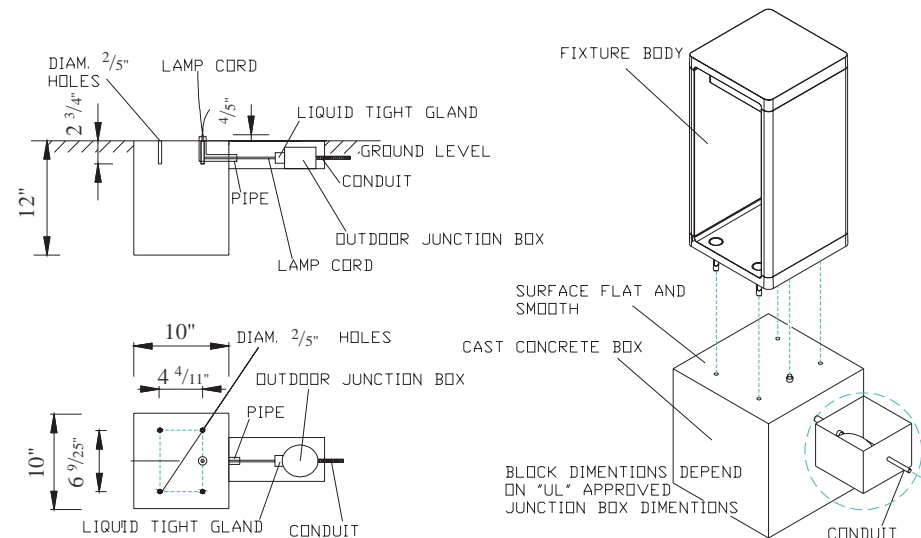
**PRE-INSTALLATION PREPARATIONS**

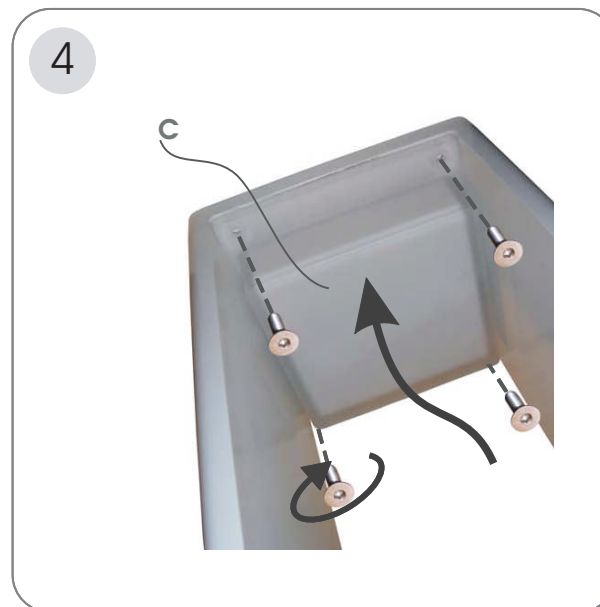
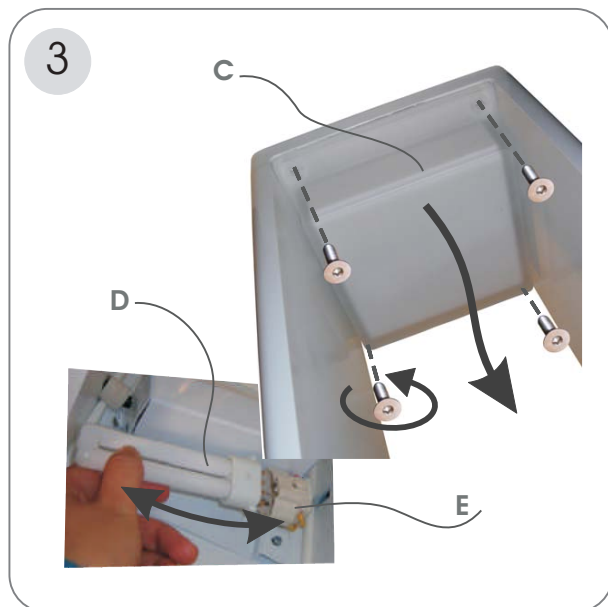
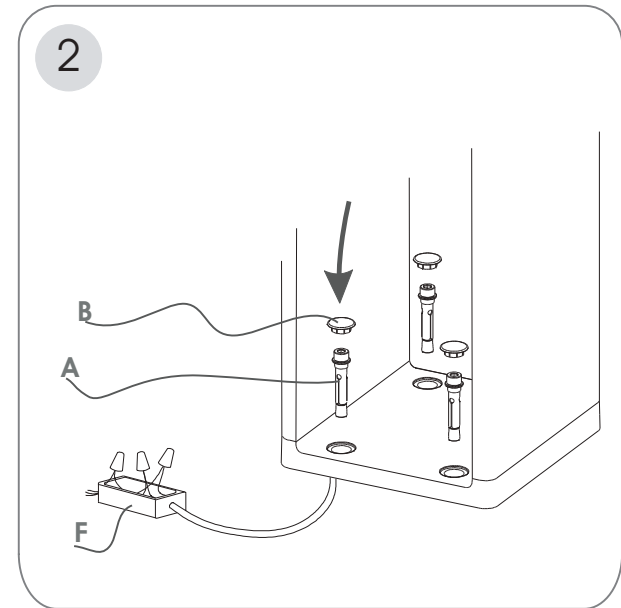
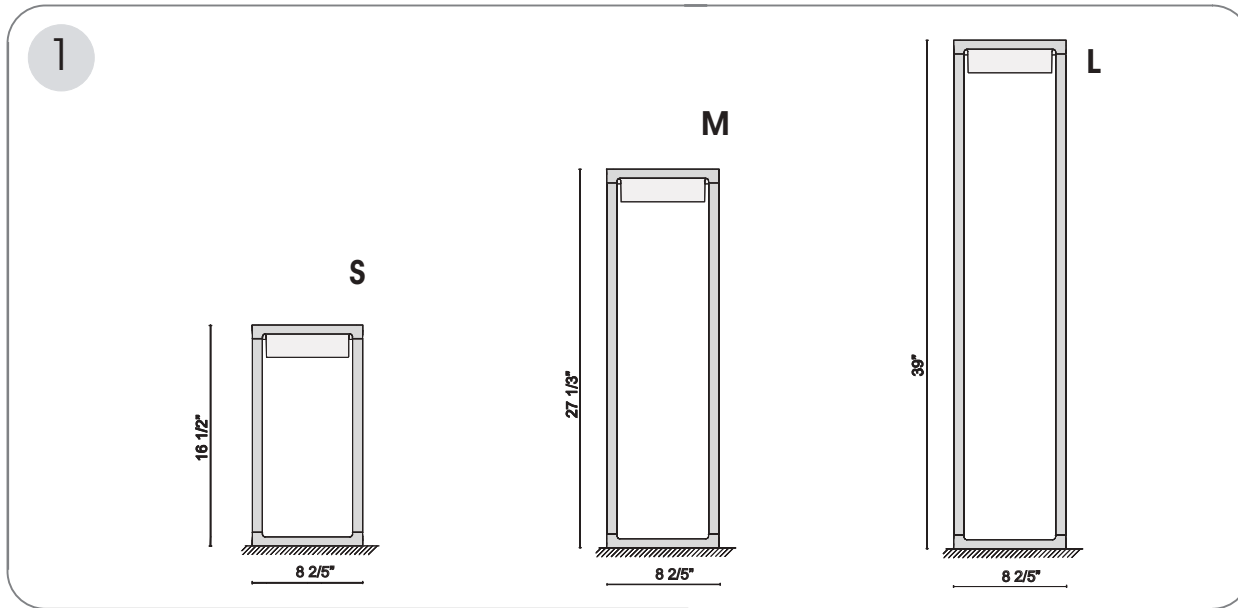
-CAST CONCRETE BLOCK 10" LONG, 10" WIDTH AND 12" DEEP WITH THE TOP LEVEL WITH THE GROUND. MAKE PLACE FOR THE "UL" APPROVED JUNCTION BOX, WHICH DIMENSIONS SHOULD VARY ACCORDING TO JUNCTION BOX DIMENTION, LEAVING PLACE BETWEEN JUNCTION BOX AND FIXTURE.

-BLOCK SHOULD INCLUDE (4) 2/5" IN DIAMETER AND 2 3/4" DEEP HOLES, MAKE THEM IN A DISTANCE 6 6/25" LONG, 4 4/11" WIDTH FROM EACH OTHER.

-BLOCK SHOULD ALSO INCLUDE A 1/3" STEEL CONDUIT WITH AWG RATED WIRING RUNNING THROUGH IT. STEEL CONDUIT SHOULD BE SETTED BETWEEN 2 OF THE HOLES, AT 3 3/25" FROM EACH HOLE, IN THE MIDDLE OF THE IMMAGINARY LINE WHICH CONNECTS THEM. THE STEEL CONDUIT SHOULD PROJECT ABOUT 4/5" ABOVE TOP OF CONCRETE BLOCK.

**NOTE: TOP SURFACE OF CONCRETE BLOCK ON WICH FIXTURE WILL BE MOUNTED HAS TO BE LEVEL AND VERY SMOOTH IN ORDER TO MAKE A WATER-TIGHT SEAL.**





- 1** General measurements of the lamp.
- 2** Attach the lamp to the floor by the base using washers and screws "A". Insert the plugs "B". Make connections in the junction box "F".
- 3** To change the fluorescent bulbs: Unscrew the glass "C". Fit the bulb "D" in the lamp holder "E".
- 4** Screw the glass "C" back on.