

A modern outdoor furniture set is displayed on a light-colored patio. The set includes a long, curved sofa with several teal and dark blue cushions, two round ottomans in teal and dark blue, and a single armchair in dark blue. The background features a clear blue sky, a body of water, and a range of mountains. A large, leafy tree is visible in the upper right corner. The overall scene is bright and airy, suggesting a high-quality outdoor living environment.

VONDOM

Polyurethane

Polyurethane

Polyurethane foam is a highly elastic material used in the furniture industry. It is characterised by the fact that when the load to which it has been subjected is removed, it instantly recovers its original shape.

The final result is a flexible and durable material.



Manufacturing



After a long time of analysis and research, we have incorporated the cold injection technique using flexible polyurethane with metal structure reinforcement inside.

The result is trendy collections suitable for outdoor and indoor use, with a variety of colours, textures and upholstery to create a more sophisticated and elegant outdoor experience.

Resistance

The combination of components in the manufacture of our polyurethane furniture, it creates an insulating effect that interferes with the growth of fungi and bacteria.

We use a water-repellent treatment in order to avoid water filtration and to create pieces that are more resistant to extreme weather conditions.

In addition, the rigid internal metal structure makes the furniture firmer and more rigid.



Tensile strenght	3 y 10 (Kp./cm2)
Compressive strength	1.5 y 9 (Kp./cm2)
Shear strenght	1 y 5 (Kp./cm2)
Modulus of elasticity	40 y 200 (Kp./cm2)

Comfort



Fusing craftsmanship and advanced technology, attention to detail, industrial production and blurring the boundaries between indoors and outdoors, our polyurethane collections represent a higher level of softness, comfort, quality and durability than those currently available on the market.

Vondom makes it possible, thanks to the company's values of resistance, adaptability and technique, to place outdoor furniture in the heart of the home, as well as bringing the warmth and comfort of the home outdoors.

Finishes

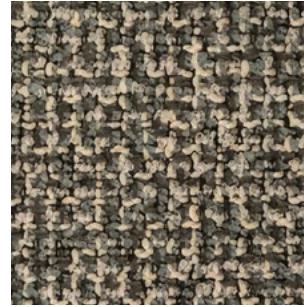
Krollet / 2A



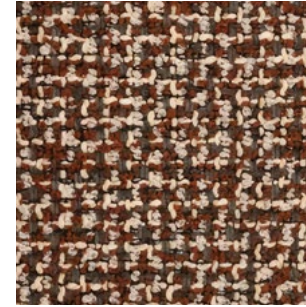
Krollet 1921



Krollet 1922



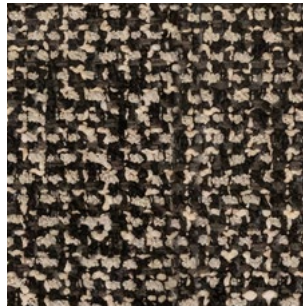
Krollet 1923



Krollet 1924



Krollet 1925



Krollet 1926

Finishes

Hyggue / 2B



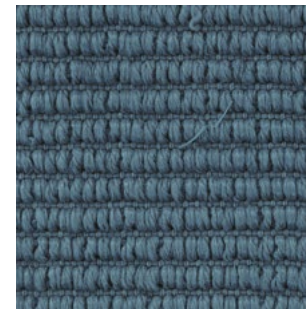
Hygge 1080



Hygge 1081



Hygge 1082



Hygge 1083

Finishes

Varm / 2B



Varm 1060



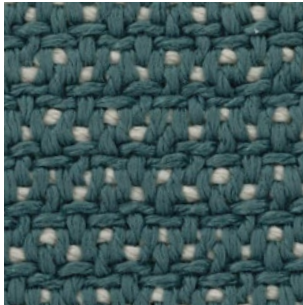
Varm 1061



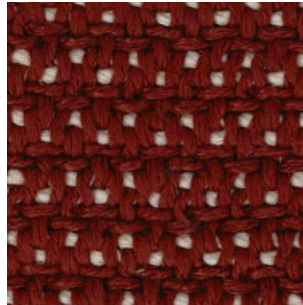
Varm 1062



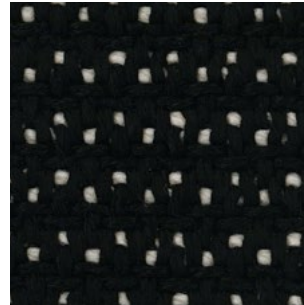
Varm 1063



Varm 1064



Varm 1065



Varm 1066



Varm 1067



Varm 1068



Varm 1069



Varm 1070



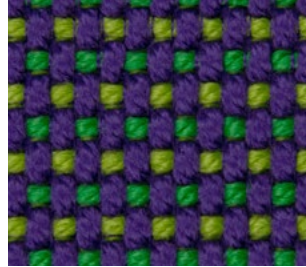
Varm 1071

Finishes

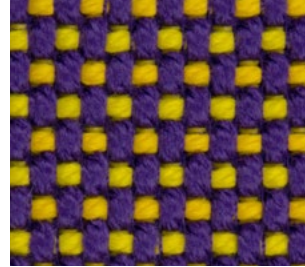
Glad/2C



Berry 1021



Masai 1018



Sunset 1020



Noa 1026



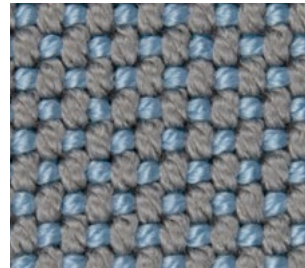
Pruna 1045



Amatista 1011



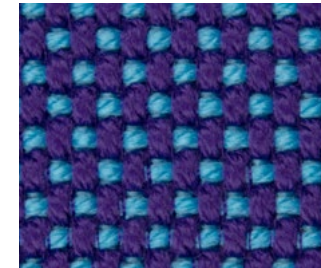
Galan 1025



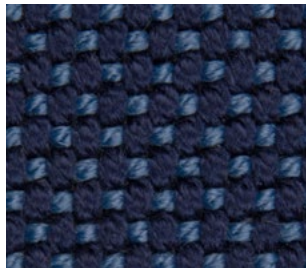
Perla 1006



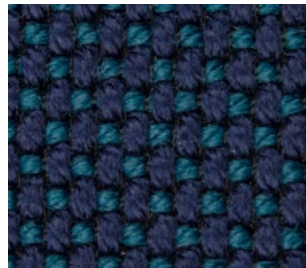
Eclipse 1023



Calipso 1017



Night 1024



Ultramar 1002



Niord 1015



Aquamarina 1003



Esmeralda 1016

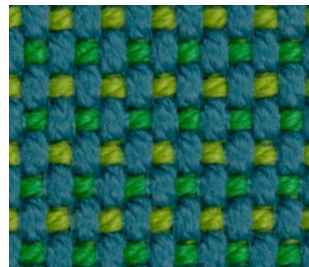
Glad/2C



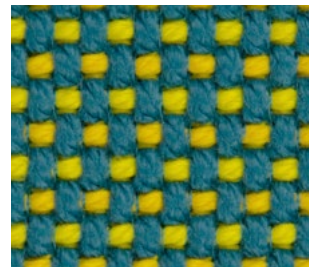
Bosc 1029



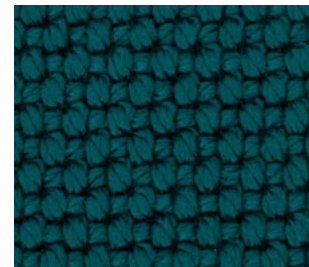
Artemisa 1027



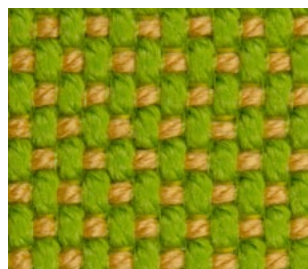
Oceano 1005



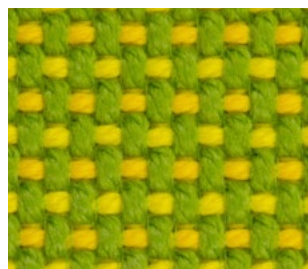
Caribe 1004



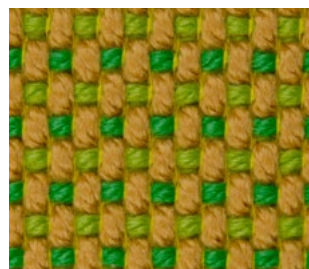
Turquoise 1053



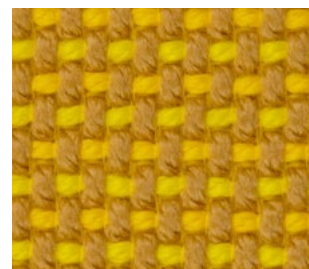
Aguacate 1028



Lima 1030



Delhi 1038



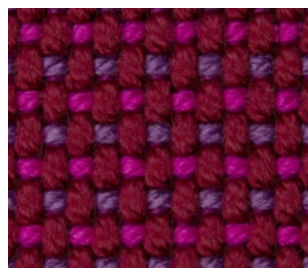
Oro 1031



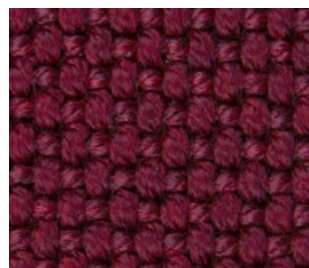
Ocre 1051



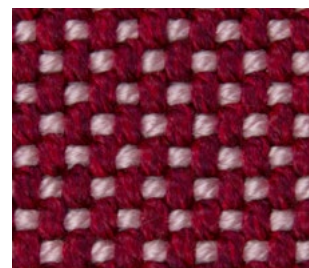
Vera 1019



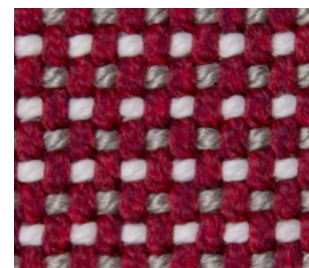
Afrodita 1013



Grana 1046



Dahlia 1035

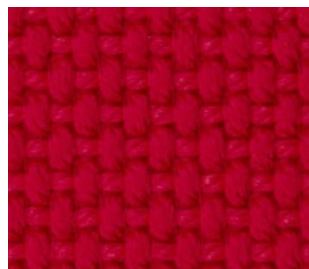


Bacco 1034

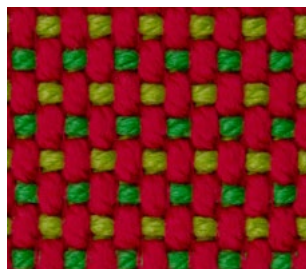
Glad/2C



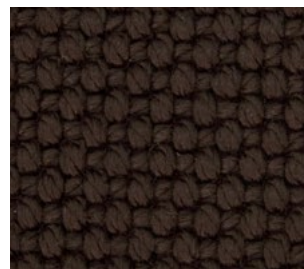
Wine 1012



Foc 1052



Hestia 1014



Chocolate 1050



Moka 1010



Ecrú 1047



Desert 1033



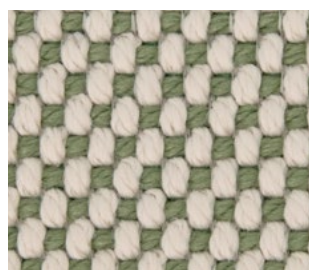
Taupé 1048



Terra 1039



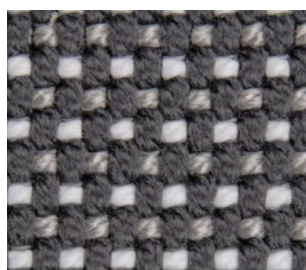
Duna 1009



Oasis 1007



Moon 1040



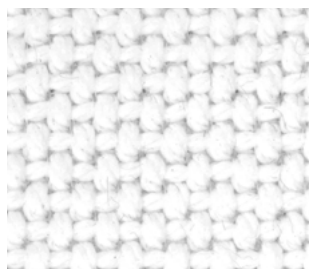
Granito 1008



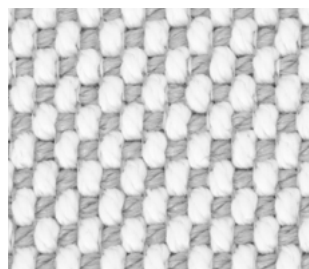
Grey 1043



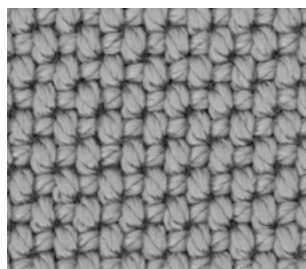
Anthracite 1044



Snow 1041



Iceberg 1037



Steel 1042

Cleaning and care

Our production is governed by the standards of our quality assurance system ISO 9001:2008 and environmental system ISO 14001:2004. And we use only the highest quality materials to guarantee a long product life.

Steps to clean furniture with polyurethane:

1. Soap up the area and the surrounding area with a cloth.
2. Always brush in just one direction.
3. In order to avoid differences between a recently cleaned areas and the rest of the product we recommend to wash the whole product.

For a better preservation of the furniture, it is advisable to cover each of the items.

VONDOM

info@vondom.com

+34 962 39 84 86

vondom.com

