

A modern outdoor furniture set, including a large sectional sofa, two armchairs, and two ottomans, is arranged on a light-colored patio. The furniture is upholstered in a dark blue fabric with teal-colored cushions and ottomans. The background features a scenic view of a lake, mountains, and trees under a cloudy sky. A large, white, bold text 'VONDOM' is overlaid on the center of the image.

# VONDOM

Fabrics

# Fabrics

Vondom design furniture upholstered with our fabrics allows any environment to be given a touch of sophistication and freshness.

We offer fabrics with extraordinary levels of performance, durability and design. Made and approved to withstand the toughest outdoor conditions.

Anti-stain treatment, waterproofing, UV resistance, cold cracking and mould spore resistance ensure that our furniture can be used in all outdoor spaces and areas with high humidity and chlorine, such as spas and indoor swimming pools.



## Group 1 fabrics

Natural and neutral shades or bold tones to create a truly attractive colour palette.

Available in Nautical (1A), Silvertex, Heritage, Savane, Crevin (1B), Cico, Siesta, Acapulco, and Ikon (1C).

Heritage and Crevin fabrics are made from recycled plastics.



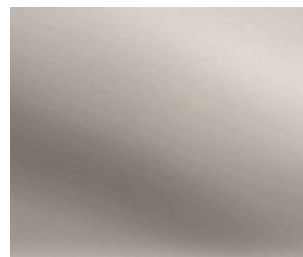
## Nautical/1A



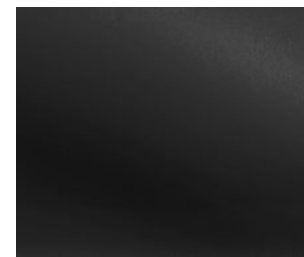
White 1100



Steel 1101



Taupe 1102



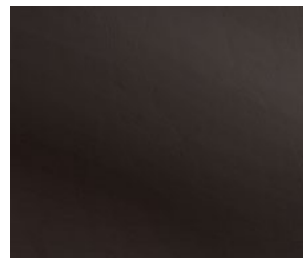
Black 1105



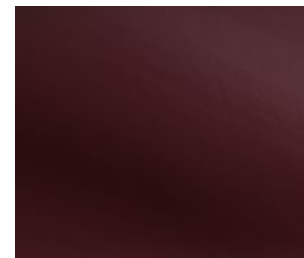
Natural 1111



Crema 1103



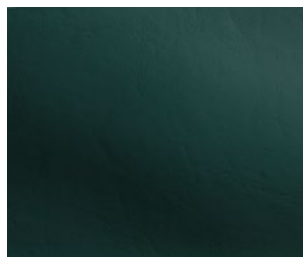
Bronze 1104



Purjai Red 1106



Notte Blue 1114



Forest 1112

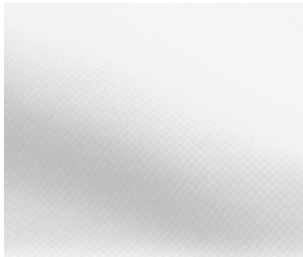


Orange 1113



Red 1108

## Silvertex/1B



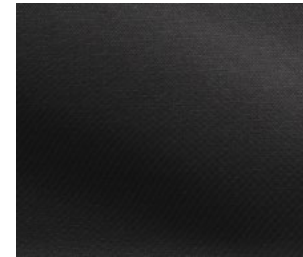
White 1219



Steel 1208



Taupe 1209



Anthracite 1210



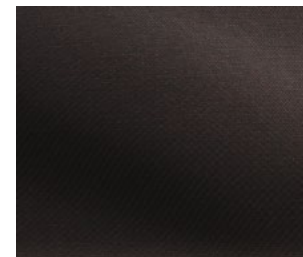
Natural 1220



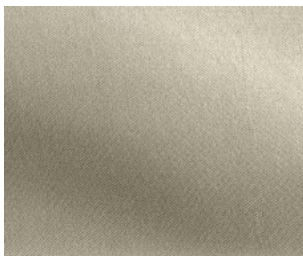
Beige 1211



Ecru 1221



Bronze 1214



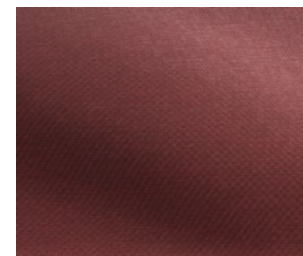
Kaki 1218



Forest 1224

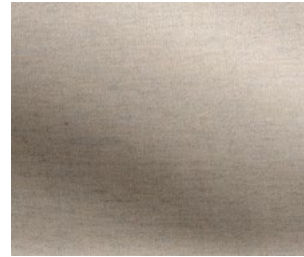


Notte Blue 1222



Purjai Red 1223

## Heritage /1B



Papyrus 1530



Granite 1531

## Savane /1B



White 1501

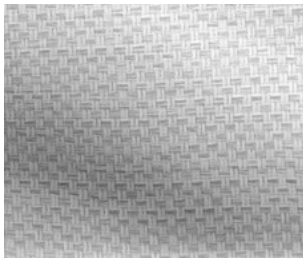


Whisper 1502



Tornado 1503

## Crevin /1B



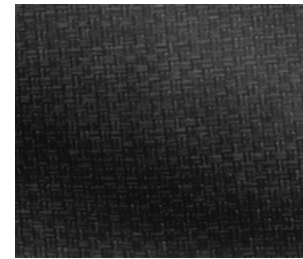
White 1308



Steel 1309



Taupe 1310



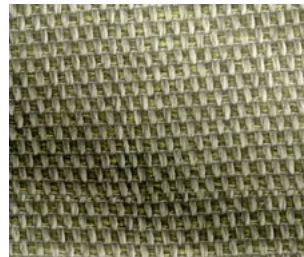
Anthracite 1311



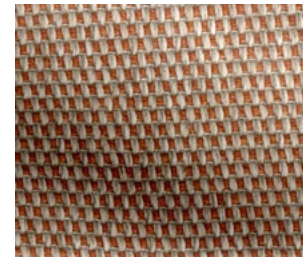
Blue 1301



Deep Blue 1302



Lemongrass 1303



Melon 1304

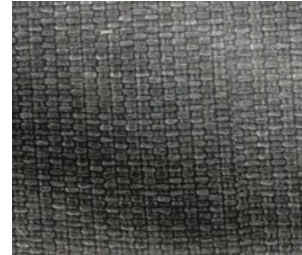
## Cico /1C



Limestone 1701



Gravel 1702



Greywacke 1704



Onix 1705



Sandstone 1703



Cranberry 1707



Blueberry 1706

## Siesta /1C



Siesta 1810



Siesta 1811



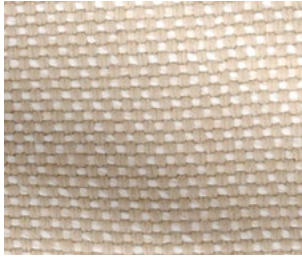
Siesta 1812



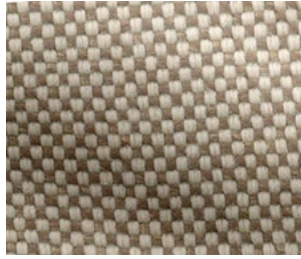
Siesta 1813



## Acapulco/1C



Acapulco 1801



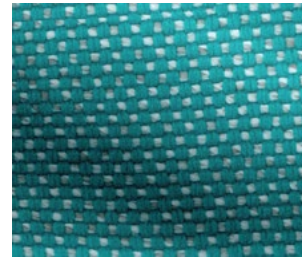
Acapulco 1802



Acapulco 1803



Acapulco 1804

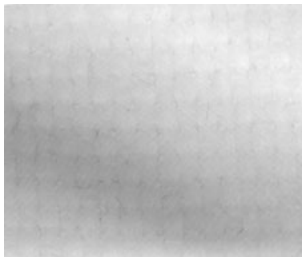


Acapulco 1806

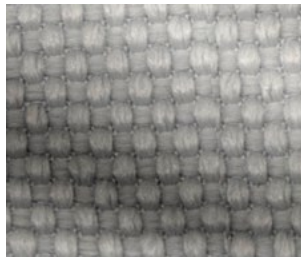


Acapulco 1805

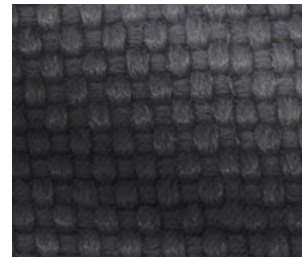
## Ikon/1C



Ikon 1830



Ikon 1831



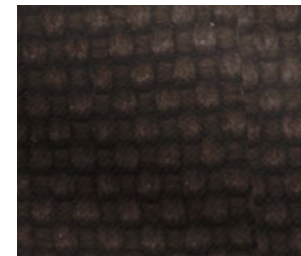
Ikon 1832



Ikon 1833



Ikon 1834



Ikon 1835

# Fabrics / Features

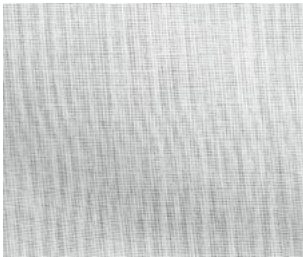
Fabric Tejido	Weight Peso	Flame Resistance Resist. Ignifuga	Resistance Abrasion	Color Fastness Solidez Del Color	Composition Composición	Maintenance Mantenimiento	Symbols Símbolos
<b>Nautical.</b> Soft acrylic outdoor fabric with leather-like texture.	657 gr/m2	EN 1021 1-2 DIN 4102 B2 BS 5852 DIN 53438/T2 CAL TB 117	>100.000 cycles	XENOTEST DIN 54004/ NTC 1479 ASTM D-4329/ CFFA-2 c2	Vinyl Coating, 100% Polyester Backing	Clean using a cotton cloth with neutral soap 1/9 water solution. Rub dry with a clean cloth and let dry.	
<b>Silvertex.</b> Soft-shiny acrylic outdoor fabric.	685 gr/m2	EN 1021 1-2 DIN 4102 B2 NF P 92-503 / M2 UNE 23.727-90 IR/ M2 IMO MSC.307 CAL TB 117	>300.000 cycles	>7 - DIN 54004 NTC 1479 (UV outdoor) 4 - ISO 105B04	Vinyl Coating, 100% Polyester Backing	Clean using a cotton cloth with neutral soap 1/9 water solution. Rub dry with a clean cloth and let dry.	
<b>Savane.</b> An irregular weave reveals its textural beauty. Suited naturally to all outdoor furnitures.	400 gr/m2	CAL TB 117 NFPA 260 UFAC - Class I	50.000 cycles	(UV indoor) 8/8 - ISO 105B02 (UV outdoor) 4-5 - ISO 105B04	100% Acrylic	Clean using a cotton cloth with 1/5 household bleach solution. Remove all bleach residues with water. Rub dry with a clean cloth and let dry.	
<b>Dralon.</b> Basic acrylic outdoor fiber for contract products' cushions.	185 gr/m2	BS5852 0/1 UNE 1021 1 BS7176 Low hazard	25.000 cycles	(UV indoor) 6-7/8 - ISO 105B02 (water) 5 - ISO 105E03/02/01	100% Acrylic	Clean using a cotton cloth with neutral soap solution. Rub dry with a clean cloth and let dry.	
<b>Crevin.</b> Upholstery fabric with a medium size and elegant weave. 40% made with recycled PET.	520 gr/m2	EN 1021 1 BS5852 0/1 CAL TB 117 NFPA 260	60.000 cycles	(water) 4-5 - ISO 105E03/02/01 (UV outdoor) >6 - ISO 105B04	40% Recycled PET 60% PP	Clean using a cotton cloth with 1/5 household bleach solution. Remove all bleach residues with water. Rub dry with a clean cloth and let dry.	
<b>Heritage.</b> Made using 50% of recycled plastics.	335 gr/m2	BS5852 0/1 UNE 1021 1 BS7176 Low hazard	25.000 cycles	(UV indoor) 7-8/8 - ISO 105B02 (UV outdoor) 5/5 - ISO 105B04	50% Recycled acrylic, 47% Sunbrella acrylic, 3% PE	Clean using a cotton cloth with neutral soap solution. Rub dry with a clean cloth and let dry.	
<b>Velum.</b> Lightweight and semi-transparent fabrics for curtains.	165 gr/m2	-	-	(UV indoor) 8/8 - ISO 105B02 (UV outdoor) 4-5 - ISO 105B04	100% Acrylic	Clean using a cotton cloth with 1/5 household bleach solution. Remove all bleach residues with water. Rub dry and let dry.	
<b>Batylina.</b> breathable acrylic mesh used on sun loungers and sunroofs.	500 gr/m2	EN 1021 1-2 EN 13501 - 1 DIN 4102 B1 NFP 92-507 CAL TB 117 IMO MSC 307	>120.000 cycles	4/5 ASTM G154	Polyester fibre protected with PVC coating.	Wash the mesh with a mild liquid detergent and fresh water, using a soft bristle brush. Batylina mesh has anti-fungal treatment where the moist will have no effect on it.	
<b>Cico.</b> Cozy fabric with an elegant look and soft touch.	423 gr/m2	BS5852 0/1	25.000 cycles	(UV indoor) 7/8 - ISO 105B02 (UV outdoor) 4/5 - ISO 105B04	100% Polypropylene	Clean using a cotton cloth with neutral soap solution. Rub dry with a clean cloth and let dry.	
<b>Siesta.</b> Cozy fabric with an elegant look and soft touch.	500 gr/m2	TB117-2013 UNE 1021 1	60.000 cycles	-	100% Polypropylene	Clean using a cotton cloth with neutral soap solution. Rub dry with a clean cloth and let dry.	
<b>Acapulco.</b> Cozy fabric with an elegant look and soft touch.	500 gr/m2	TB117-2013 UNE 1021 1	>30.000 cycles	-	100% Polypropylene	Clean using a cotton cloth with neutral soap solution. Rub dry with a clean cloth and let dry.	
<b>Ikon 36.</b> Cozy fabric with an elegant look and soft touch.	650 gr/m2	TB117-2013 UNE 1021 1	30.000 cycles	-	100% Polypropylene	Clean using a cotton cloth with neutral soap solution. Rub dry with a clean cloth and let dry.	

## Special fabrics

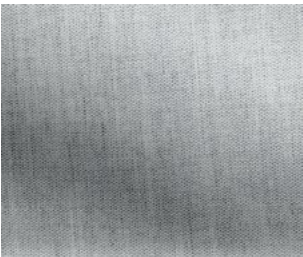
We also offer fabrics for the canopies and curtains of the daybeds, as well as the fabric of the polypropylene sun loungers, such as Velum, Batyline, Roof Fabric and Roof Rope.



## Velum

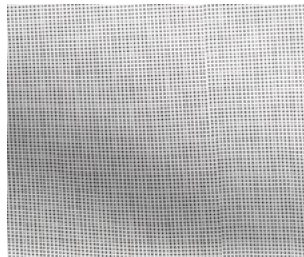


White 1540



Steel 1541

## Batyline



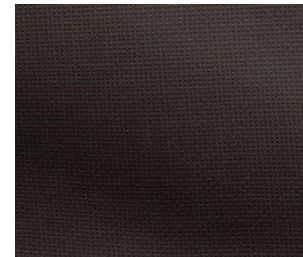
White 1901



Steel 1902



Ecu / Taupe 1904

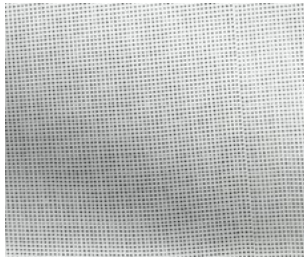


Bronze 1905

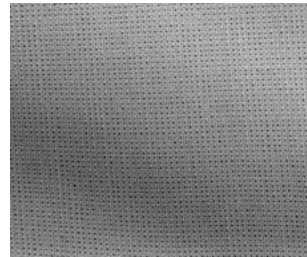


Black 1903

## Roof Fabric



White 1910



Steel 1911



Ecru 1912



Bronze 1913

## Roof Rope



Snow 1201



Ecru 1202



Gray 1203



Taupe 1204

## Group 2 fabrics

New textures and trendy colours that reflect the sensuality, warmth and elegance of our most premium collections.

Extremely resistant fabrics thanks to their high-tech water-repellent process that protects the product from damage caused by rain, heat and cold.

This category of fabrics incorporates the design finishes Krollet, Hygge, Varm and Glad.



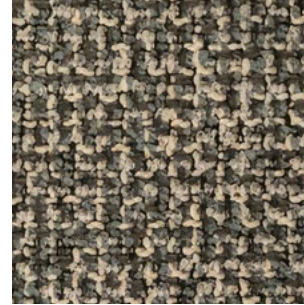
## Krollet / 2A



Krollet 1921



Krollet 1922



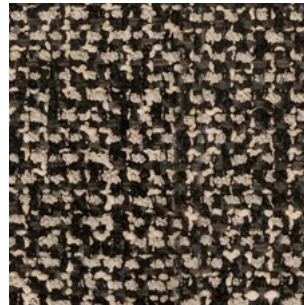
Krollet 1923



Krollet 1924



Krollet 1925



Krollet 1926

## Hyggue / 2B



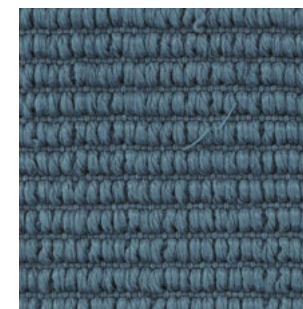
Hygge 1080



Hygge 1081



Hygge 1082



Hygge 1083

## Varm/2B



Varm 1060



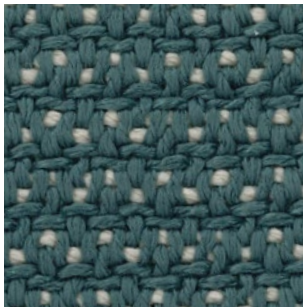
Varm 1061



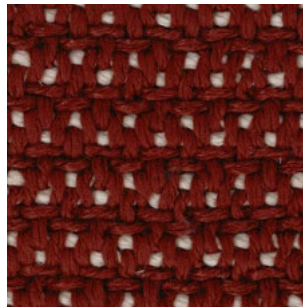
Varm 1062



Varm 1063



Varm 1064



Varm 1065



Varm 1066



Varm 1067



Varm 1068



Varm 1069



Varm 1070



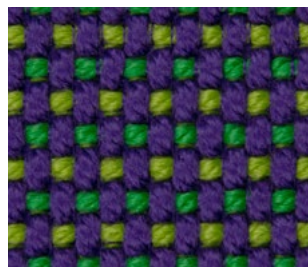
Varm 1071



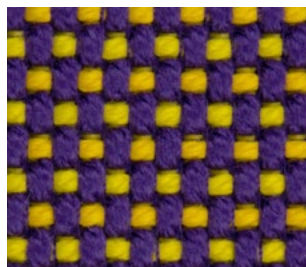
# Glad/2C



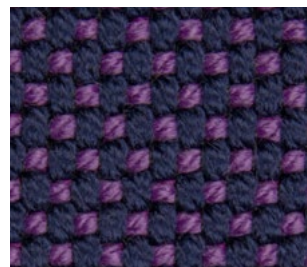
Berry 1021



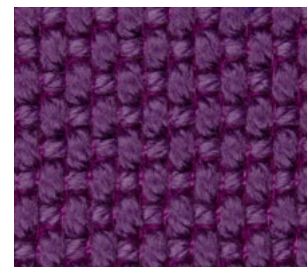
Masai 1018



Sunset 1020



Noa 1026



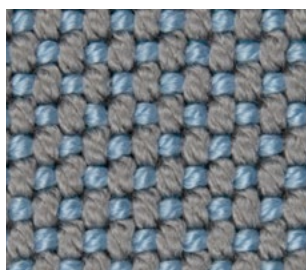
Pruna 1045



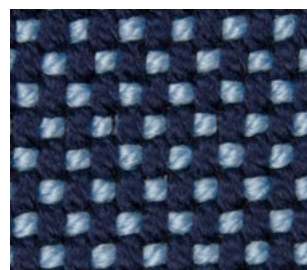
Amatista 1011



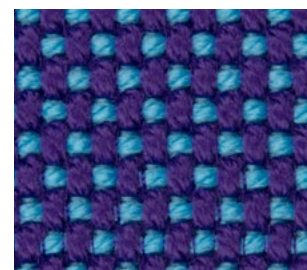
Galan 1025



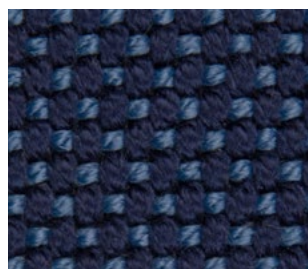
Perla 1006



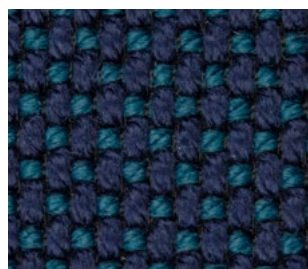
Eclipse 1023



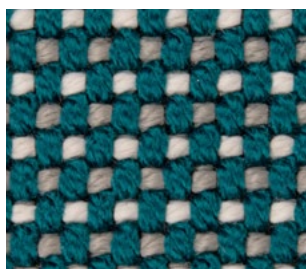
Calipso 1017



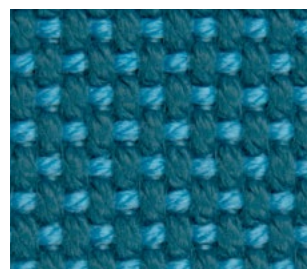
Night 1024



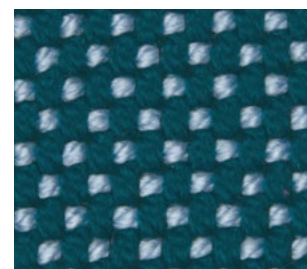
Ultramar 1002



Niord 1015

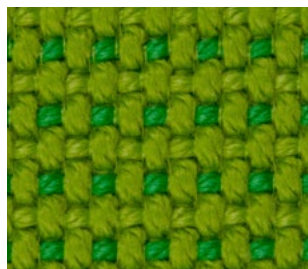


Aquamarina 1003



Esmeralda 1016

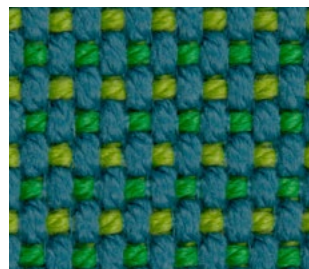
# Glad/2C



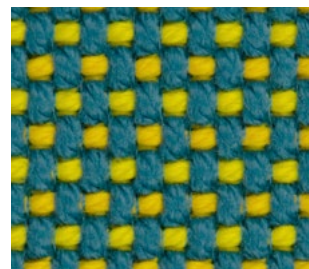
Bosc 1029



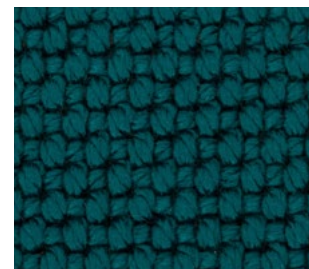
Artemisa 1027



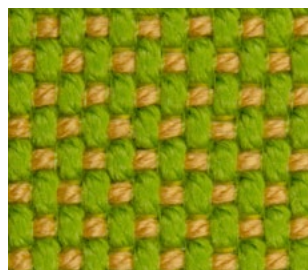
Oceano 1005



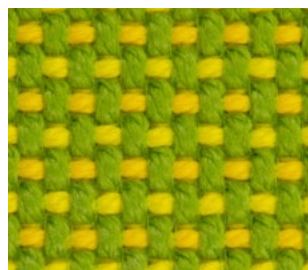
Caribe 1004



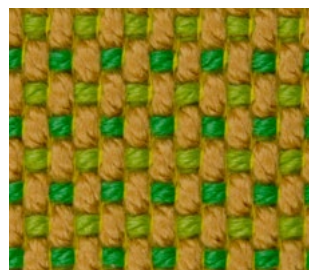
Turquoise 1053



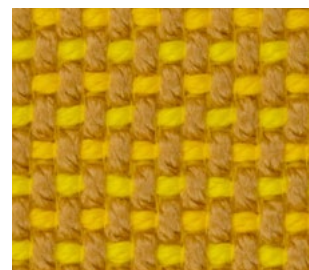
Aguacate 1028



Lima 1030



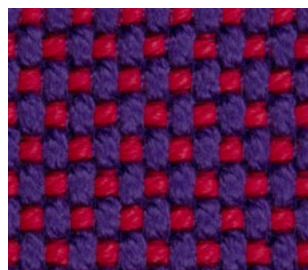
Delhi 1038



Oro 1031



Ocre 1051



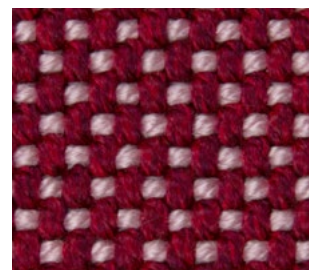
Vera 1019



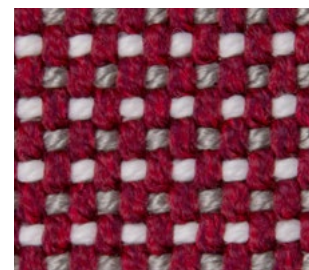
Afrodita 1013



Grana 1046

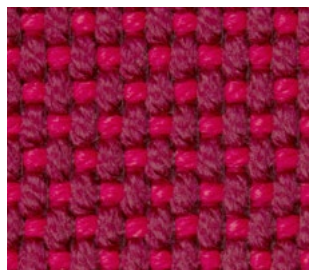


Dahlia 1035

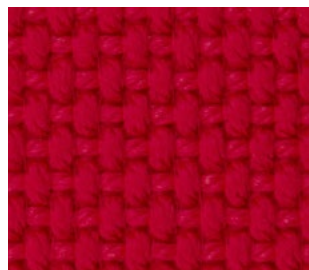


Bacco 1034

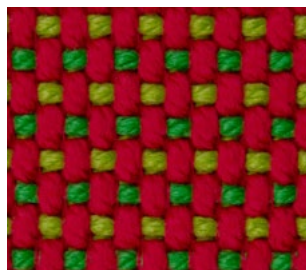
# Glad/2C



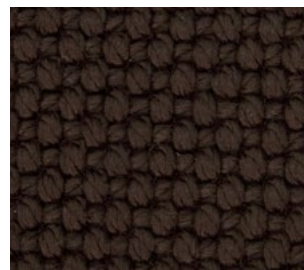
Wine 1012



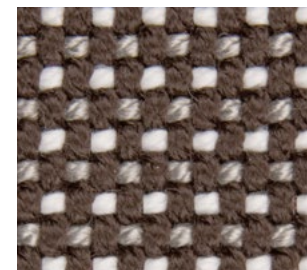
Foc 1052



Hestia 1014



Chocolate 1050



Moka 1010



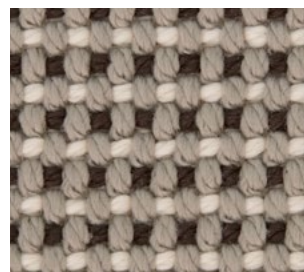
Ecrú 1047



Desert 1033



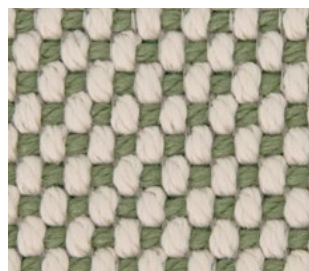
Taupé 1048



Terra 1039



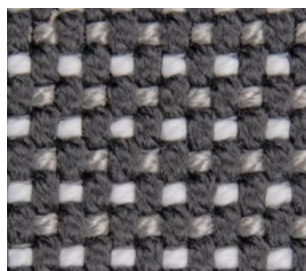
Duna 1009



Oasis 1007



Moon 1040



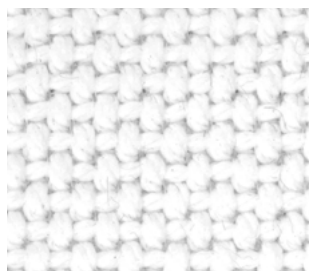
Granito 1008



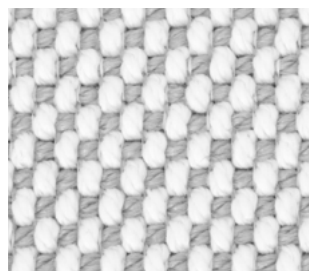
Grey 1043



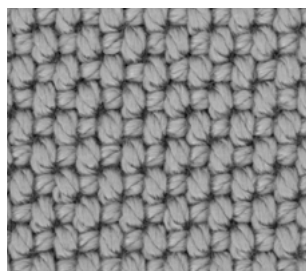
Anthracite 1044



Snow 1041



Iceberg 1037



Steel 1042

## Fabrics / Features

Fabric Tejido	Weight Peso	Flame Resistance Resist. Ignifuga	Resistance Abrasion	Color Fastness Solidez Del Color	Composition Composición	Maintenance Mantenimiento	Symbols Símbolos
<b>Krollet.</b> Elegant fabric with a pleasant touch and great comfort.	985 gr/ml	-	40.000 cycles		94% PP + 6 % PC S.D.		
<b>Varm.</b> Cozy fabric with a pleasant touch and great comfort.	850 gr/m2	cigarette test: BS5852 part 1:(1990)	60.000 cycles	Factor 7UV UNI EN ISO 20105-B02	100% Polypropylene	<p>The whashing podwer should not contain oxidizing agents o brightening agents. In case of dropped liquid or water on the fbric remove all spills immediately but not the rub. Gently blot liquid spills with a clean dry cloth</p>	
<b>Hygge.</b> Cozy fabric with a pleasant touch and great comfort.	910 gr/m2	cigarette test: BS5852 part 1:(1990)	60.000 cycles	Factor 7UV UNI EN ISO 20105-B02	100% Polypropylene		
<b>Glad.</b> Premium fabric with a wide range of colours	975 gr/m2	cigarette test: BS5852 part 1:(1990)	30.000 cycles	Factor 7UV UNI EN ISO 20105-B02	100% Polypropylene		

# VONDOM

[info@vondom.com](mailto:info@vondom.com)

+34 962 39 84 86

[vondom.com](http://vondom.com)

