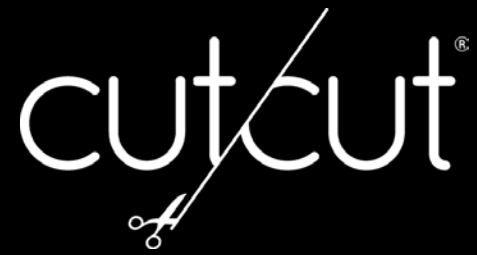


cutcut®





OUTDOOR

COLLECTION

PT A CutCut é uma empresa portuguesa de carpetes, que produz e distribui para o canal B2B. Sediada em Coimbra, Portugal, iniciou a sua atividade com o propósito de colmatar uma lacuna existente no mercado - personalizar e criar tapetes adaptados às necessidades dos seus clientes. Atualmente a CutCut exporta para cerca de 50 países e está presente em todos os continentes. Tornou-se numa marca reconhecida no setor, não só pela qualidade dos produtos, mas também pelo atendimento e acompanhamento no serviço pós-venda e pela proximidade com os clientes. Todos estes elementos são indicadores da personalidade da marca e também do seu compromisso.

No universo CutCut há espaço para uma multiplicidade de carpetes e é essa versatilidade que é realçada neste catálogo, que combina a energia, a frescura e o glamour das coleções CutCut e reflete o profissionalismo dos que trabalham diariamente para acompanhar os clientes.

EN CutCut is a Portuguese carpet company, which produces and distributes to the B2B channel. Headquartered in Coimbra, Portugal, it started the activity with the aim of filling a gap in the market - to customize and creating carpets fitting the customer needs. CutCut exports to around 50 countries and is present on all continents. It has become a recognized brand in the sector, not only for the quality of the products, but also for the care and follow-up in after-sales service and proximity to customers. All these elements are indicators of brand personality and also of their commitment. In the CutCut universe there is a variety of carpets, from the soberest to the most daring, and it is this versatility that is highlighted in this catalog that combines the energy, freshness and glamour of the CutCut collections and reflects the skills of those who work daily to accompany customers.

ES CutCut es una empresa portuguesa de alfombras, que produce y distribuye para el canal B2B. Con sede en Coimbra, Portugal, empezó su actividad con el objetivo de rellenar una falta existente en el mercado, personalizar y crear alfombras adaptadas a las necesidades de sus clientes. Actualmente, CutCut exporta a cerca de 50 países y está presente en todos los continentes. Es una marca reconocida en su sector, no solo por la calidad de sus productos pero también por su servicio pos-venta y por su relación de confianza con sus clientes. Todos estos elementos son indicadores de la personalidad de la marca pero tambien de su compromiso.

En el universo de CutCut hay espacio para una multiplicidad de alfombras, desde las más simples a las más coloridas és esta versatilidad que está destacada en este catalogo, que combina energía, frescura y el glamour de las colecciones CutCut; eso refleja el profesionalismo de los demás que trabajan todos los días para servir a sus clientes.

ÍNDICE

BY SIZE

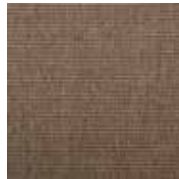
BOGOTA _____	5
CAMBERRA _____	6-9
VALETA _____	10

STANDARD

ARTEMIS _____	11
ELEMENT _____	12-15
FORTUNA _____	16
LINK _____	17-18
LOFT _____	19
REVERSE _____	20
ROYAL _____	21
SALOON _____	22-23
SHARP _____	24-25
TEASE _____	26
WOOD _____	27-31



01



02



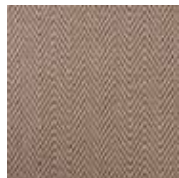
03



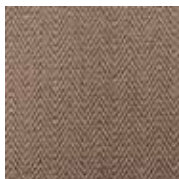
04



05



06



07



08



09



10

máx.
cm
400

100% PP

1,93
kg/m²

4,6
mm

BOGOTA



01



02



03



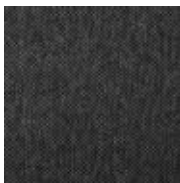
04



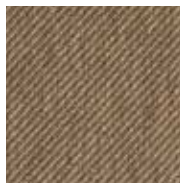
05



06



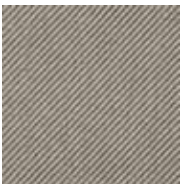
08



09



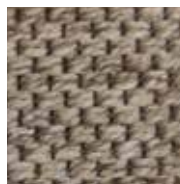
07



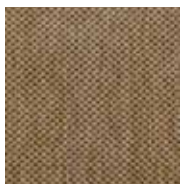
11



12



13



14



15



16

máx.
cm

400



100% PP



01 / 02 / 03 / 04
1,52
05 / 06 / 07 / 08
1,65
09 / 10 / 11 / 12
1,69

mm

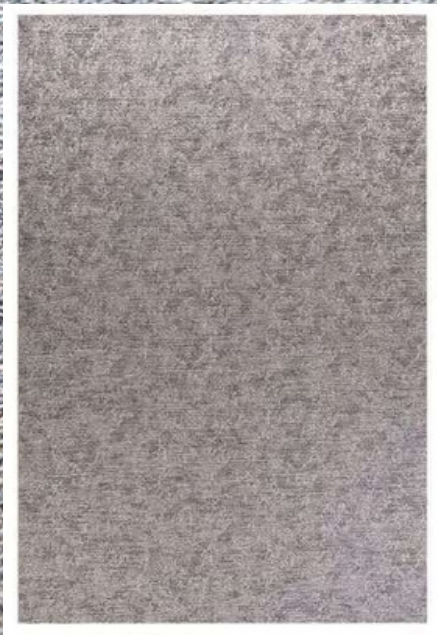
01 / 02 / 03 / 04
3,20
05 / 06 / 07 / 08
5,10
09 / 10 / 11 / 12
3,50

CAMBERRA





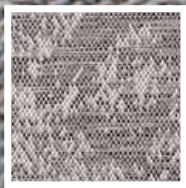




02



01



03



04

VALETA

máx.
cm

400



100% PP



1,64



5

mm



cm

140 x 200
170 x 240
200 x 300
250 x 350



60%
PP 25%
PL 15%
VI



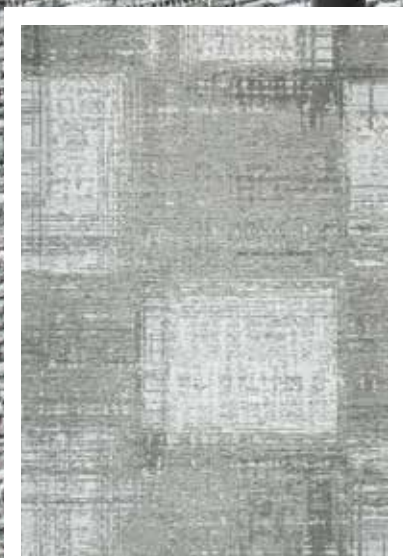
2,40

mm

9

ARTEMIS

ELEMENT AER



140x200
160x230
200x290
240x340

100% PP

0,93 KG/m²
3 mm

ELEMENT AQUA



140x200
160x230
200x290
240x340

100% PP

0,93 KG/m²
3 mm

ELEMENT IGNIS



140x200
160x230
200x290
240x340

100% PP

0,93 KG/m²
3 mm

ELEMENT TERRA



140x200
160x230
200x290
240x340

100% PP

0,93 KG/m²
3 mm



cm

140 x 200
170 x 240
200 x 300
250 x 350



60% PP
25% PL
15% VI



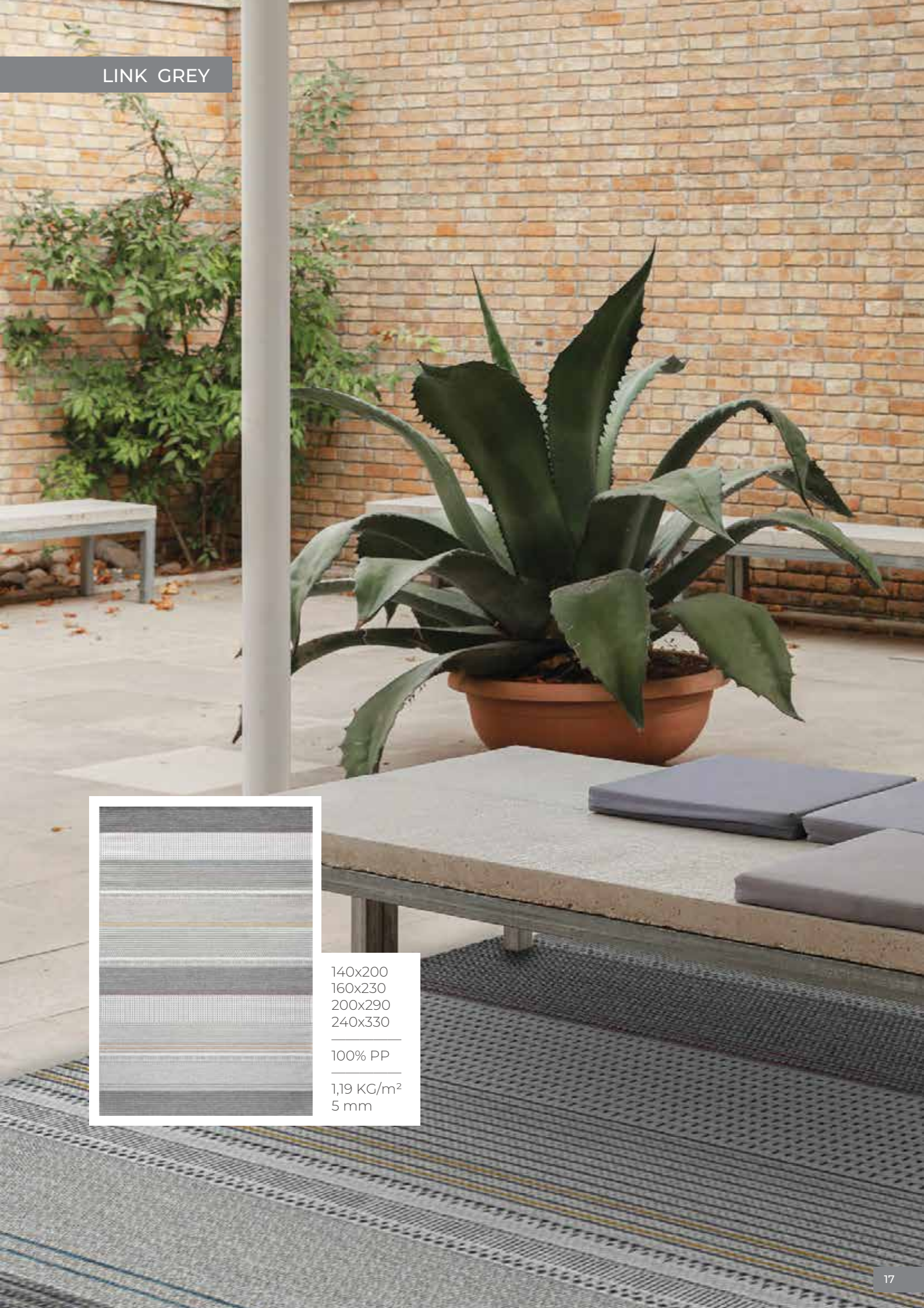
2,60

mm

12

FORTUNA

LINK GREY



140x200
160x230
200x290
240x330

100% PP

1,19 KG/m²
5 mm

LINK DARK GREY



140x200
160x230
200x290
240x330

100% PP

1,19 KG/m²
5 mm



LOFT

cm

140 x 200
170 x 240
200 x 300
250 x 350



100% PP



3,30

mm

11



REVERSE



cm
140 x 200
170 x 240
200 x 300
250 x 350

100% PP 3,20 11





140 x 200
170 x 240
200 x 300
250 x 350


100% PP

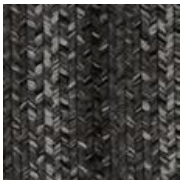

3,10

| mm
11

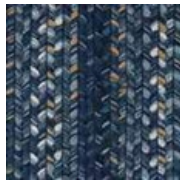
ROYAL



YELLOW



GREY



BLUE

SALOON

máx.
cm

140 x 200
170 x 240
200 x 300
250 x 350



60% PP
20% PL
20% VI



2,30

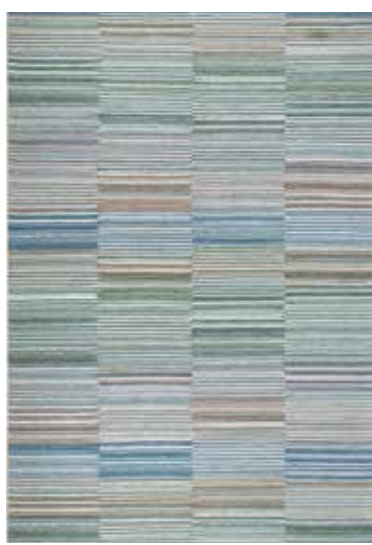
mm

8





SHARP GREEN



140x200
160x230
200x290
240x330

100% PP

1,19 KG/m²
5 mm

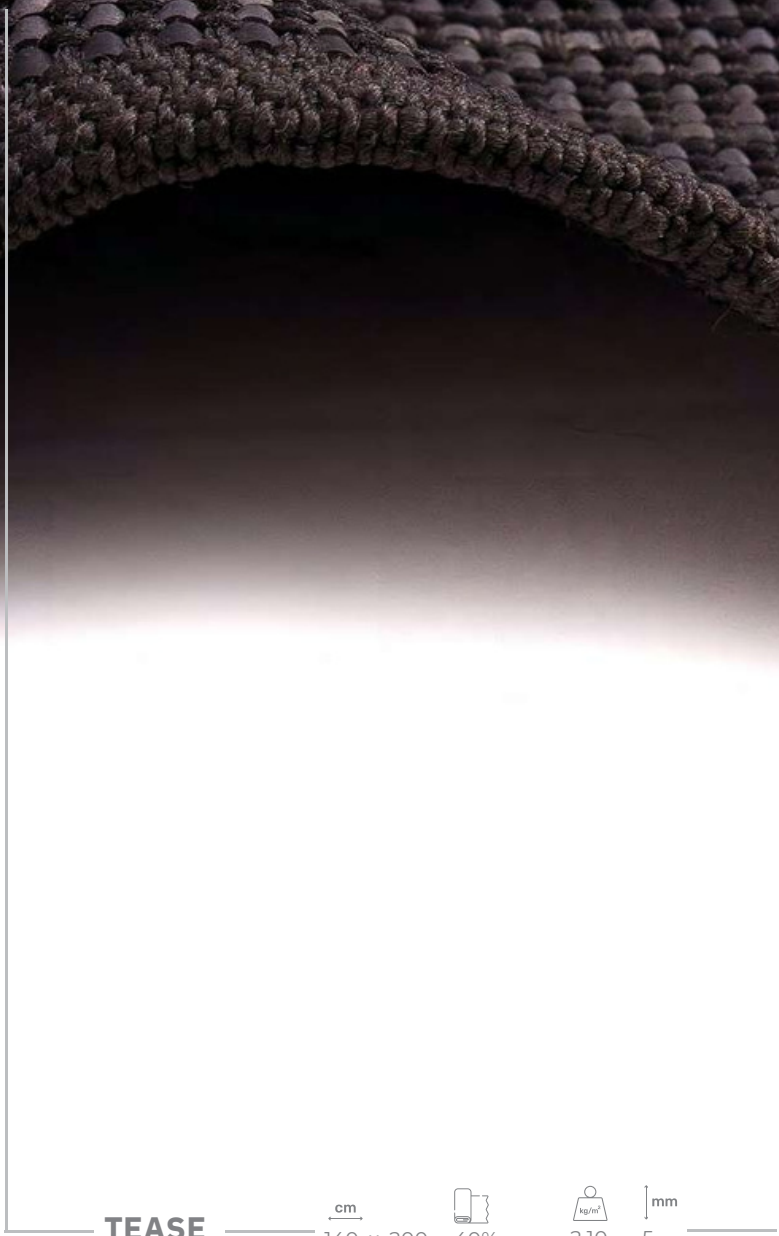
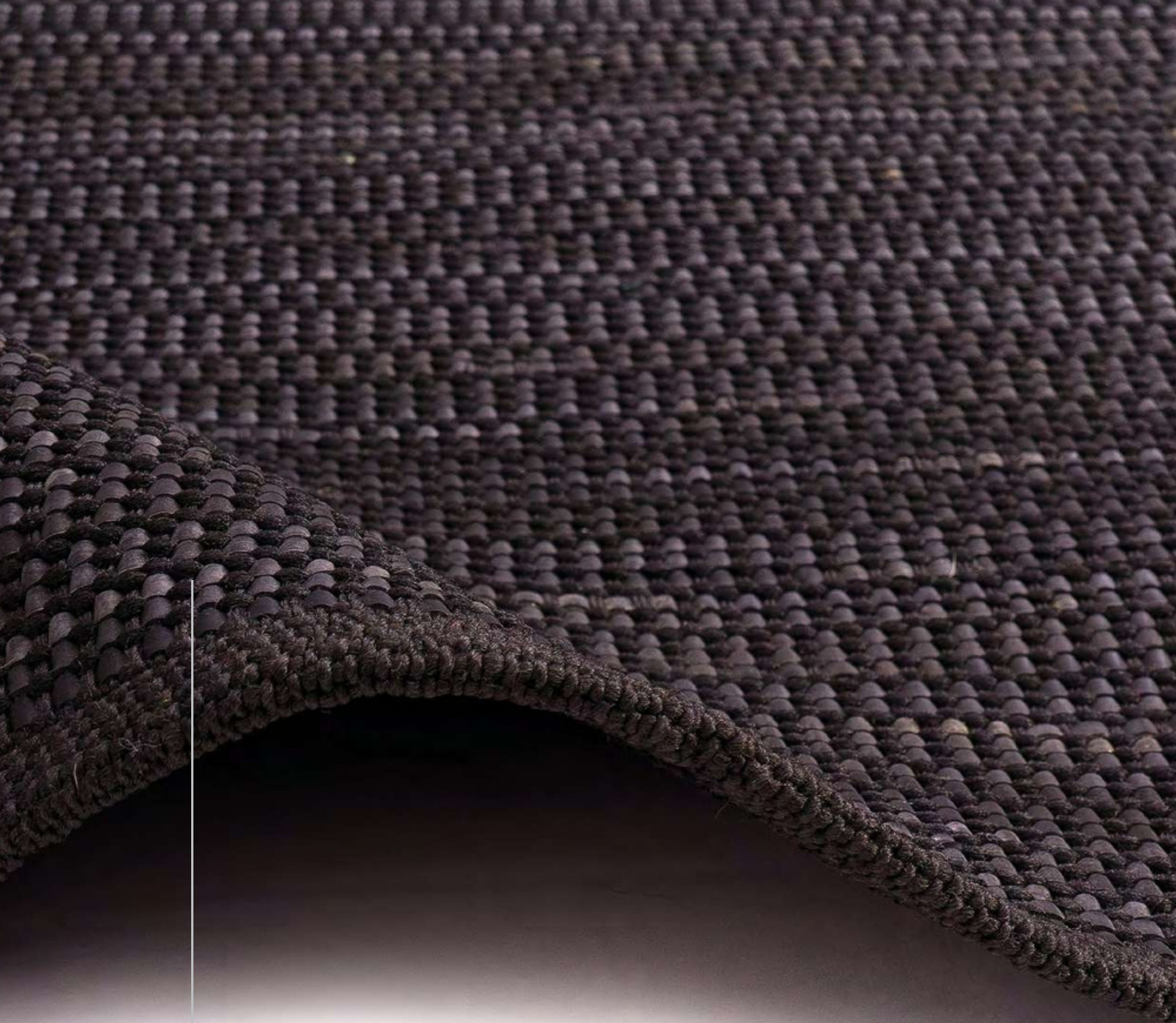
SHARP MULTI



140x200
160x230
200x290


100% PP

1,19 KG/m²
5 mm



TEASE

cm
140 x 200
170 x 240
200 x 300
250 x 350


40%
PP 60%
RB


2,10


5



WOOD BROWN



140x200
160x230
200x290
240x340

100% PP

0,93 KG/m²
3 mm

WOOD CREAM



140x200
160x230
200x290
240x340

100% PP

0,93 KG/m²
3 mm

WOOD GRAFITE



140x200
160x230
200x290
240x340

100% PP

0,93 KG/m²
3 mm

WOOD GREEN

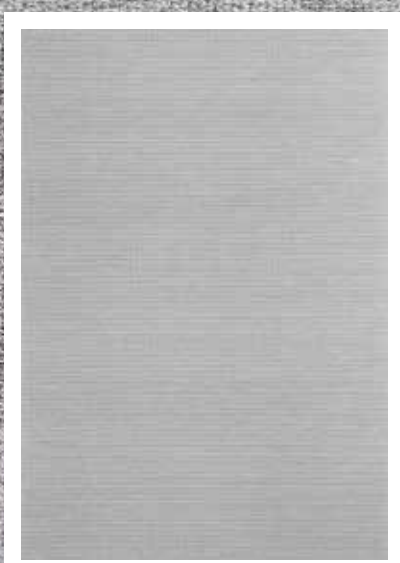


140x200
160x230
200x290
240x340

100% PP

0,93 KG/m²
3 mm

WOOD GREY



140x200
160x230
200x290
240x340

100% PP

0,93 KG/m²
3 mm



Total Weight/M2 | Peso Total/M2



Total Height | Altura Total



Washable | Lavável | Lavable



By Size | Por Medida



COMPOSITION

Composição | Composición

VI - Viscose | Viscosa

PP - Polypropylene | Polipropileno

PA - Polyamide | Poliamida |

Poliamid LH - Leather | Pele | Piel

PL - Polyester | Poliéster

LI - Linen | Linho | Lino

CH - Chenille

CO - Cotton | Algodão | Algodón

PC - Acrylic | Acrílico

WO - Wool | Lã | Lana

RB - Rubber | Borracha | Goma

IMPORTANT INFORMATION

Informação Importante | Información Importante

EN Due to the characteristics of the pile, the carpets could have some differences in color piece to piece. Because of the printing process, the colors in this catalogue may slightly be different from original colors.

PT

Devido às características do fio dos tapetes podem ocorrer diferenças de cor de peça para peça. Devido aos métodos de impressão usados podem ocorrer ligeiras diferenças de cor, ainda que as fotografias deste catálogo sejam muito fiéis à realidade.

ES

Por causa de las características de hilo de las alfombras, pueden existir diferencias de tonalidades entre varias piezas. Debido a los procesos de impresión, los colores en este catálogo pueden tener alguna diferencia con los colores originales.



