

infiniti



**Almost Icons  
Catalogue 2022**





infiniti is a “teenager” brand, born in 2008, which offers furnishing designed to work, relax and socialize. Creativity, technological innovation, design-thinking: these are the key concepts for understanding the philosophy of infiniti, which proposes furnishing accessories – chairs, stools, tables, sofas – created for the needs of contemporary life. From the first steps, infiniti believed that design should be a value to be shared in good company, a concept extended to the urban, public and professional community with a recognizable, practical and elegant touch.

infiniti always believed that communicating is also an important part of every brand, and every picture taken from infiniti around the world wanted to communicate: irony - needed more and more in nowadays world, culture - root of every man in the earth, internationalization – since we are all part of the human melting pot, mental openness - fundamental pillar for understanding each other, multiethnicity – because a bunch of flower is always better when mixed, and finally an understandable strong connection to the Italian design heritage.

infiniti



## Seating Solutions

**Freya**<sup>32</sup>  
**Round&Round**<sup>38</sup>  
**Canova**<sup>44</sup>  
**Feluca**<sup>52</sup>  
**Ruelle**<sup>58</sup>  
**Tondina POP**<sup>64</sup>  
**Sicla**<sup>74</sup>  
**Relief**<sup>80</sup>  
**Pure Loop Mono**<sup>84</sup>  
**Pure Loop Binuance**<sup>90</sup>  
**Pure Loop Maxi**<sup>96</sup>  
**Pure Loop Lounge**<sup>100</sup>  
**Loop Mono**<sup>106</sup>  
**Loop 3D Wood**<sup>112</sup>  
**Cookie**<sup>118</sup>  
**Next**<sup>124</sup>  
**Eastwood**<sup>130</sup>  
**Settesusette**<sup>136</sup>  
**Porta Venezia**<sup>142</sup>  
**Ekki**<sup>148</sup>  
**Harmo**<sup>154</sup>  
**Woodstock**<sup>160</sup>  
**Seame**<sup>164</sup>  
**Bi**<sup>170</sup>  
**Úti**<sup>176</sup>  
**Fiorellina**<sup>180</sup>  
**Drop**<sup>186</sup>  
**Kram**<sup>192</sup>  
**BomBom**<sup>198</sup>  
**Peb**<sup>204</sup>  
**Demoiselle**<sup>208</sup>  
**Callita**<sup>214</sup>  
**PinUp**<sup>220</sup>  
**Klejn**<sup>226</sup>  
**Flink**<sup>232</sup>  
**Flink Wood**<sup>238</sup>  
**Pure Loop Mini**<sup>242</sup>  
**Picapau**<sup>248</sup>  
**Bobo**<sup>254</sup>  
**Record Bench**<sup>260</sup>  
**Sys**<sup>264</sup>

## Tables

**Landing**<sup>270</sup>  
**Versable**<sup>274</sup>  
**Next Table**<sup>278</sup>  
**Record Living**<sup>282</sup>  
**Record Meeting**<sup>286</sup>  
**Record Contract**<sup>290</sup>  
**Rami**<sup>294</sup>  
**Diapason**<sup>298</sup>  
**Ruelle Table**<sup>302</sup>  
**Feluca Table**<sup>306</sup>  
**Flink Table**<sup>310</sup>

## Designers

**Brogliato Traverso**  
**Claus Breinholt**  
**Favaretto&Partners**  
**Thomas Pedersen**  
**Andreas Ostwald**  
**mC.dsg**  
**Quaglio Simonelli**  
**Marc Sadler**  
**Marcello Ziliani**  
**Oleg Pugachev**  
**Fabrizio Batoni**  
**Philippe Tabet**  
**Klaus Nolting**  
**Robin Rizzini**  
**Dorigo Design**  
**Kai Stania**  
**Radice Orlandini**



infiniti

# DESIGNERS

[dɛ'zainərz]

DESIGNERS

## BrogliatoTraverso



8

---

**Settesusette**  
2016

---

**Harmo**  
2017

---

**Peb**  
2018

---

**Landing**  
2018

---

**Feluca**  
2019



Both graduated at I.U.A.V. of Venice, after several experiences ranging from the art of glass in Murano to the traditional ceramics in Japan, they founded BrogliatoTraverso design studio in 2012. The research of a “quiet elegance” is the link through their products, allowing to apply innovative characters in a natural way without aesthetic forcing. This vision and the constant passion for research and innovation have allowed BrogliatoTraverso to win some of the most

prestigious international awards, such as Red Dot Design Award, Good Design Award, iF Design Award and Young&Design.

DESIGNERS

## Claus Breinholt



---

**Loop 3D Wood**  
2008

---

**Pure Loop Mini**  
2014

---

**Pure Loop Binuance**  
2014

---

**Pure Loop Mono**  
2017

---

**Canova**  
2018

---

**Sicla**  
2019

---

**Loop Mono**  
2020

---

**Freya**  
2020



Claus Breinholt was born in a small town in rural western Denmark. As the son of a furniture dealer with a preference for Danish design, he grew up surrounded by classic pieces by Hans J. Wegner, Arne Jacobsen and Ole Wanscher.

During his studies in Graphic Design, Breinholt soon found that his passion laid in designing furniture. Already during his second semester studying furniture design at the School of Design at the Royal Danish Academy in Copenhagen

he won a scholarship for his innovative approach to the design process. In 2003 he opened his studio based in Copenhagen, where he operates in the fields of industrial design and furnishing design for the contract and home sectors. He has won numerous national and international awards including FORBO Design Competition and the Danish Woodworking and Furniture Industries Competition. His products were exhibited from 2000 to 2006 at the Scandinavian Furniture

Fair in Copenhagen, in 2001 at the Satellite Show in Milan, in 2001 and 2003 at the International Furniture Fair in Stockholm and at Interzum in Cologne, in conjunction with Reholz GmbH.

DESIGNERS

**Favaretto&Partners**



10

---

**Tondina**  
2015

---

**BomBom**  
2019

---

**Relief**  
2019

---

**Diapason**  
2019



Curiosity, tenacity and passion for research have characterized our work for more than 40 years at our Design Studio of industrial design and interior architecture founded in 1973 in Padua by Paolo Favaretto. Back in the 1980s, the Studio was one of the first in Italy to engage in business relationships abroad, collaborating with prestigious companies in North America, Europe and Asia. In 2009, with the entry of the young Francesco Favaretto, the activities of the Studio

have extended even further and now cover various areas of design, from industrial design to communication, and from tangible to digital matter. The product design sector ranges from telephones to furniture (seating, lighting, upholstered furniture), from medical to home decor. Our Studio is particularly specialized in the design, prototyping and industrialization office furniture, technical seating (executive armchairs, operational chairs) as well as community seating. Favaretto&Partners

supports and practices the principles of Design for All, a declaration accepted by the European Commission and promoted by the IIDD (Italian Institute Design Disability, today known as DFA Italy), which is in favor of good design practices that aim to ensure the accessibility of places and objects to the widest range of users.



DESIGNERS

## Thomas Pedersen



---

**Klejn**  
2018

---

**Flink**  
2018

---

**Kram**  
2018

---

**Flink Table**  
2019



Thomas Pedersen's design displays typically Danish characteristics, with a clear emphasis on simplicity. He combines classic organic lines with innovative ideas and details. Much of his fascination for furniture design comes from the fact that it is possible to build full-scale models of the concepts he has in his head. He is firmly convinced that it is only by doing this that it is possible to test the qualities of his products with his own body, to assess their durability and thus make

certain that the results live up to expectations.

Thomas's role models include Charles and Ray Eames, whose furniture design work was always focused on ergonomics and comfort, accommodating the human body.

Over the years Thomas Pedersen has won a number of awards for his designs. He is best known for his StingRay chair, which he designed as his graduation project in Aarhus.

DESIGNERS

## Andreas Ostwald



12

---

**Callita**  
2012

---

**Next**  
2013

---

**Next Table**  
2016

---

**Eastwod**  
2019



Andreas Ostwald was born in Germany in 1964. After an apprenticeship as a ceramic modeller and having studied Industrial Design in Kiel, in 1996 he started up his own business, giving life to Ostwalddesign studio. From 1996 to 2006 he taught design at the "Muthesius Hochschule" of Kiel, and since 2005 he is professor at the HFK University of Bremen. In his of product and interior design research, Ostwald is always looking for complete uniqueness, leading to the creation

of exclusive products and spaces. Core of his philosophy is the ambition for aesthetic perfection, attainable only through absolute proportions. To Ostwald, an appealing design must be in harmonious relationship not only with its details, but also with the environment: to design products being respectful of man and the environment means researching innovative interaction with the new technological and physical possibilities.

DESIGNERS  
**mC.dsg**

---



---

**Úti**  
2018

---

**Record Living**  
2018

---

**Record Bench**  
2018

---

**Record Contract**  
2018

---

**Ekki**  
2019

---

**Record Meeting**  
2019

---

**Sys**  
2020



mC.dsg is an Italian design studio founded by Matteo Coracin in 2017. The studio takes inspiration mainly from the simple lines, the nature and the emotions that only the cured objects give. Concepts that arise from the “emptiness idea”: products designed first of all to create emotions in their essentiality. “All you need is less” is the philosophy of our design. Objects designed with passion that take their cue from tradition, but are faced with a modern approach, even thinking about the smallest details.

DESIGNERS

## Quaglio Simonelli



14

Demoiselle  
2017



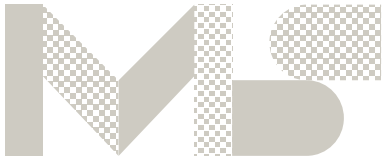
Quaglio Simonelli is the creation of two dynamic talents Andrea Quaglio and Manuela Simonelli, both graduates of the Università del Progetto, in Reggio Emilia. Their studio is based in Paris. After their debut and their two years collaboration with Philippe Starck, they founded their own design studio dedicated to provide design services to several sectors of the marketplace, believing that diversity is a source of creative richness. They design technology products, create furniture

and decorative objects, conceive the visual identity and product design for beauty brands, alternating industrial logic and artisanal approach. The result of the meeting between two complementary sensibilities has been nourished by their history, by their creative gaze they direct on the world that surrounds them and by the mutation they love to induce on it. In this way, they design objects that look familiar, yet contaminated with unexpected and

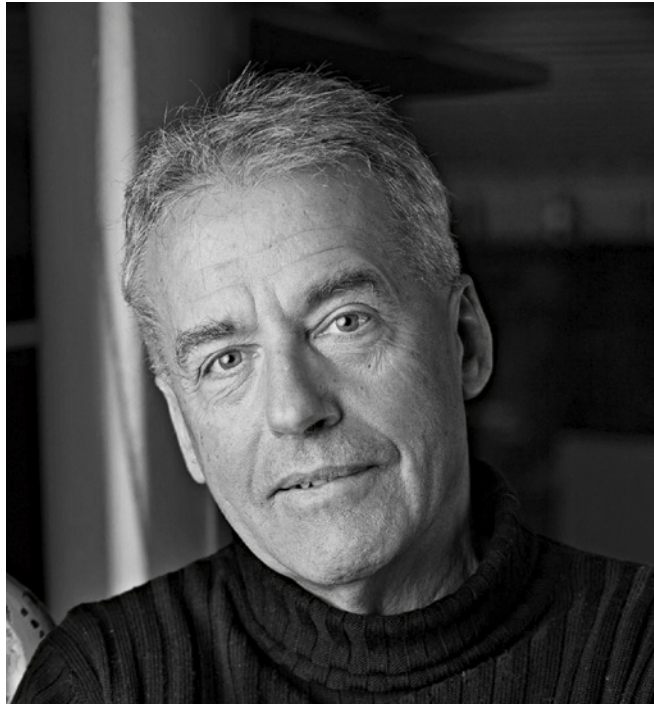
poetic elements. They have received several international awards for their designs: Red Dot Product Design Award IF Product Design Award CES Innovation Award HKDA Award, Kapok Prize Étoile de l'Observateur Janus de l'Industrie Several products they designed are now part of the collection of the National Foundation for Contemporary Art at the Centre Georges Pompidou, Paris.

DESIGNERS

## Marc Sadler



Bi  
2014



Marc Sadler is a designer and citizen of the world. Born in Austria, he has lived and worked in France, the United States, Asia and Italy. He currently lives in Milan, working as a consultant for companies in the fields of home furnishings, household appliances, lighting and sports. Constant experimentation with plastics, inspired by a passion for challenges and a strong curiosity, has always been at the centre of his research. At the beginning of the seventies, he perfect the

first ski-boot in thermo plastic material completely recyclable, subsequently commercialised by the Italian firm Caber (later known as Lotto). Working in this sector, provided the experience to enable him to bring innovation to more traditional areas where is set a concept of design as pure aesthetic shape. Awarded 4 times with the Compasso d'Oro ADI (Industrial Design association) for the lamps Drop (Flos, 1994), Tite and Mite (Foscarini, 2001), the bookshelf Big(Caimi Brevetti, 2008) and

the gelato display case Bellevue with Panorama technology (IFI, 2014), his work has won many international design awards over the years. Despite his reputation as a technical designer, Marc Sadler has a strong feeling for painting and drawing, finding it so emotionally absorbing as to consider it his real passion.

DESIGNERS

## Marcello Ziliani



16

---

**Pin-Up**  
2010

---

**Cookie**  
2013

Marcello Ziliani was born in Brescia in 1963 under the sign of Pisces.

In 1988 he graduated in architecture at Politecnico di Milano with Achille Castiglioni as a speaker.

After three years abroad, he returned to Italy and devoted himself mainly to developing projects for the design of furniture, complement, lighting, bathroom, office, objects and early childhood, working in addition to exhibitions, theatrical choreography, art direction, design

coordination, graphics and communication.

He doesn't like the absolutism and the indestructible certainties, he loves to look at things with always different eyes to be in tune with them, he prefers to speak softly and, above all, listen.

He believes that any project is, after all, a desire, a hope of flight.

He believes that, despite the great run you can do waving your arms uselessly, sooner or later you can have your ten meters of gliding.

Like all the designers, more or less, he put aside the minimum necessary equipment of prizes and awards, he has given lectures, workshops, he served on juries and so on. Since 2011 he's a professor of product design at the University of San Marino / IUAV.

DESIGNERS

## Oleg Pugachev

---



---

Round&Round  
2020



Born in Russia, Oleg Pugachev has called Berlin his home for more than half of his life. Here he graduated from the Weissensee School of Art and Design in 2013. While working for internationally active design and architecture offices, he has been pursuing his own projects with a focus on furniture ever since. Balancing of means and ends in terms of functionality, technology and aesthetics, a quest for (never banal) simplicity and coherence reflecting the complexity of the

design process, following (and questioning) one's intuition, a passion for the history of design, art and architecture are the guiding principles of his approach.



DESIGNERS

## Fabrizio Batoni



18

Fiorellina  
2013

Bobo  
2013



Fabrizio Batoni: sensitive, curious, careful, always ready to undertake new challenges. Its personal and professional life mirrors its way to be. "Always on", that is his motto, to be always turned on, always tuned in for succeeding in understanding and to identifying ideas and needs of who is around. It graduates in architecture in the Florence University, and after various experiences in the world of design and architecture, in 1997 he opens his study in Colle di Val d'Elsa,

city of the crystal and native country of Arnolfo Di Cambio, among the splendid Chianti hills. He begins the first important collaborations in the world of design and the first jobs of architecture. Today, after having acquired experience and methodology during the years, different competences, that space from the design of the product, to the interior up to the architecture, find space in his projects. The hauling motor of its activity is the desire to compare and continually risk, always

holding an eye aimed to the demands of the man and the environment that surrounds him. He has designed for Blumarine, Flou, Brandoni, Domitalia, Infiniti by Omp group and Zazzeri.



DESIGNERS

## Philippe Tabet

---



---

**Ruelle**  
2018

---

**Ruelle Table**  
2020



Philippe Tabet is a product designer from Versailles (France), based in Milan (Italy). He created in 2013 his own studio, his multidisciplinary practice offers a wide range of services , ranging from furniture to electronic design. In 2014 Tabet took part to Infiniti De-Contest and won with its project “Ruelle”, that today is one of the main products of our Chairs Collection. “Design for me is an ensemble of elements. When I was a kid, I used to draw characters, objects, shapes, a bit like I do

today. The difference, however, is that when I draw an object today, I think immediately to its material, to its production process or to its function. For example two simple wood layers glued together give birth to an object in volume: this is also the starting point of the Ruelle chair.” My challenge in this case has been to make the union of these two materials as much harmonious as possible, as the union between technique and drawing.

DESIGNERS

## Klaus Nolting

---



---

20

Seame  
2014



Born in Switzerland in 1964, Klaus Nolting studied industrial design at Kiel University in Germany. Having obtained his degree in 1992, he began working for various architecture and design firms until, in 2006, he founded ON3D, a firm that specialises in planning and designing products for modern living, developing new concepts and design products with clean, soft lines. Since 2009 he has lectured on Theory of Design, Product Technology and Concept at Germany's Mainz

University. Since 2010 he has also been a member of the Architectural Association of Hamburg. Numerous awards have been presented for the work done by Klaus Nolting, from "Light of the future" in 2001, to the Hamburger Designpreis, as well as the iF product design award, which he won in both 2011 and 2014.

DESIGNERS

## Robin Rizzini



Versable  
2020



Designer Italo-Britannico, nasce a Genova nel 1973. Dopo una lunga esperienza nello studio di Antonio Citterio a Milano, apre il suo primo studio di progettazione nel 2006. Qualche anno dopo co-fonda ed è Design Partner dello studio Metrica a Milano. Dal 2019 torna ad essere Designer indipendente. Ha lavorato con diverse aziende dell'arredamento in Italia e all'estero lavorando su progetti destinati al mercato residenziale, contract e ufficio. Condensa il linguaggio

tecnico-industriale e quello decorativo con equilibrio, con l'obiettivo di progettare oggetti e arredi essenziali, funzionali ed espressivi. Svolge da diversi anni attività di insegnamento presso la Scuola Politecnica di Design. Nel 2014 è stato premiato con il premio Compasso d'Oro.

DESIGNERS

**Dorigo Design**



22

**Porta Venezia**  
2012



Fiorenzo Dorigo was born in the province of Treviso in 1953. Since 1975, while attending art studies, he has collaborated with companies in the furniture sector, taking care of their design and image. Since 1977 he has been attending the Signomega studio and joins Bruno Maria Fracarossi in the “total design” experience of the “Seabuggy” projects (selected for the Compasso d’Oro in 1979) and “Quartz” (kitchen covered in tempered glass: 1982). Enrolled in ADI, IDD (Italian

Institute for Design and Disability) and freelance since 1987, he gained significant experience in the field of ecological, playful, pedagogical design; of teaching and systems and types in the furnishing contest for the home, appliances, office, community, cinema and theater, in Europe, the United States, the Far East. In 2002 and 2003 he held seminars on applied design at the University of Padua at the Institute for the Wood Industry. He currently designs for companies in the home,

office and community design sector. He works in Italy in his own studio in Conegliano Veneto.

DESIGNERS

## Kai Stania



Woodstock  
2017



In the perfect symbiosis between aesthetic and functionality lies the strength of the Viennese Designer Kai Stania. The proof how perfect he understands his craft is a row of national and international design awards he receives already in young years like the nomination of the German Design Award, the IF Design Award, the Red Dot Award or the selection of the 10 best Austrian furniture pieces. His furniture for example was used to furnish the MI6 office of "M" in the

latest James Bond. His spectrum ranges from a pen for HUGO BOSS till Architecture all scales of design.

Kai Stania was born 1965 in Salzburg and starts his Architecture studies 1987 on the Technical University of Vienna. Parallel to his architecture studies he starts 1990 at the University of Applied Arts in Vienna his studies of industrial design. Already 1993 he moves to London to take project leadership in Ron Arad Studio. 1996 he finishes his architecture studies with distinction

and becomes Assistant Professor at the Technical University of Vienna.

After one year working as an Architect he founds his office „kai stania | product design“ and works for design brands like Team7, Bene, Rolf Benz, Durlet and fashion accessories for brands like Hugo Boss, Cerruti, Ungaro, Nina Ricci and Cacharel.

The designer lives together with his family in his awarded house in Vienna, where he combines living and working.

DESIGNERS

## Radice Orlandini



24

---

**Drop**  
2011

---

**Picapau**  
2013



One is Milanese, born in '79, the other is Tuscan, born in '72. Both graduated from the Politecnico di Milano, the first in industrial design, the second in architecture; they met in LUCCIORLANDINI studio after various work experiences and in 2008 they began to work on different projects. Andrea is curious, he loves sport and culture, he is always looking for new and interesting stimuli.

Folco, a lover of Man, of his infinite potential and of life in all its forms and expressions, says he is

stimulated by the pulsating metropolitan heartbeat, which gives rise to his unbridled passion for the visual arts. Both defend true design, the one that creates emotions, the one that makes you stay up at night, the one that gets your hands dirty in the laboratory, the one that, synthesizing function and aesthetics, manages to last over time.







infiniti

S  
A R O U N D  
T H E  
W O R L D

['sɪt ə 'raʊnd ðə 'wɜːld]

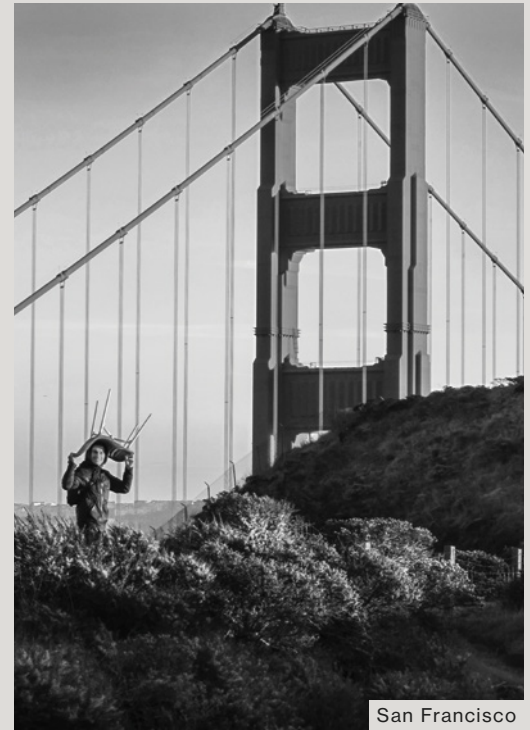
# TRAVEL WITHOUT MOVING

Travelling with imagination and having fun is part of our nature: an infiniti chair is a trip without having to move, among colours, shapes, and materials that evoke places, scents and sounds of different and marvellous worlds.

28



Cape Town



San Francisco



Istanbul



Varanasi





Venice



Mexico City



New York



Lisbon



London



Moscow



infiniti

# SEATING SOLUTIONS

['si:tɪŋ sə'lu:ʃənz]

# F R E Y A

**CLAUS BREINHOLT**  
2020

---

[ 'freɪə ]

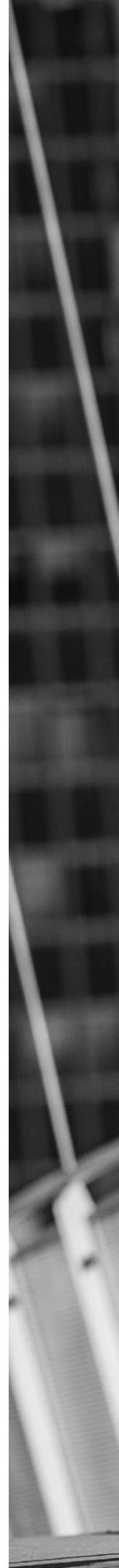
Freya is the highest expression of a pure and linear design, in which shape and functionality have always been going hand in hand. Innovation is fully expressed through the design and the concept of the chair: for the first time, a monobloc chair in recycled plastic with an upholstered internal shell is presented. The gentle curvature of the injection-molded frame embraces and accommodates a soft upholstered front panel, creating continuity among the various elements of the seat and giving an extreme comfort.



---

## Cello

The cellos are a critical part of orchestral music; all symphonic works involve the cello section, and many pieces require cello soli or solos. Much of the time, cellos provide part of the low-register harmony for the orchestra. Often, the cello section plays the melody for a brief period, before returning to the harmony role. There are also cello concertos, which are orchestral pieces that feature a solo cellist accompanied by an entire orchestra.









36

The upholstered seat is the distinctive feature of this original, comfortable and sinuous model, which can be configured in a range of different fabrics, which can be easily combined with the finish of the shell.





# ROUND & ROUND

**OLEG PUGACHEV**  
2020

---

[raʊnd ənd 'raʊnd]

At a first glance, Round&Round appears to be a classic stool, composed of a delicate structure with four legs in painted steel. But the simplicity of the shapes hides a peculiarity: the seat in recycled plastic or wood, which can be upholstered for greater comfort, spins around the central axis, thanks to a refined and invisible technical solution. Therefore, Round&Round is an essential and delicate piece of furniture, suitable for any context.











## Tapas

Tapas are an integral part of the Spanish culture, as they combine delicious food and spending time with friends into one. Tapas are essentially small plates of food served with a drink like beer or sangria. They bring people together and have always played an important role within the social life of Madrileños; for this reason, Madrid has endless tapas bars! Every bar has its specialty which stands out among the others. It is very common among locals to walk around the city and go from bar to bar. If locals are planning on visiting more than one tapas bar during the evening, this is sometimes referred to as *ir de tapas*.

The geometric perfection of the seat is framed by the delicate yet robust frame, accompanying it in games of match or unusual combinations.







# CANOVA

**CLAUS BREINHOLT**  
2018

---

[ka'novə]

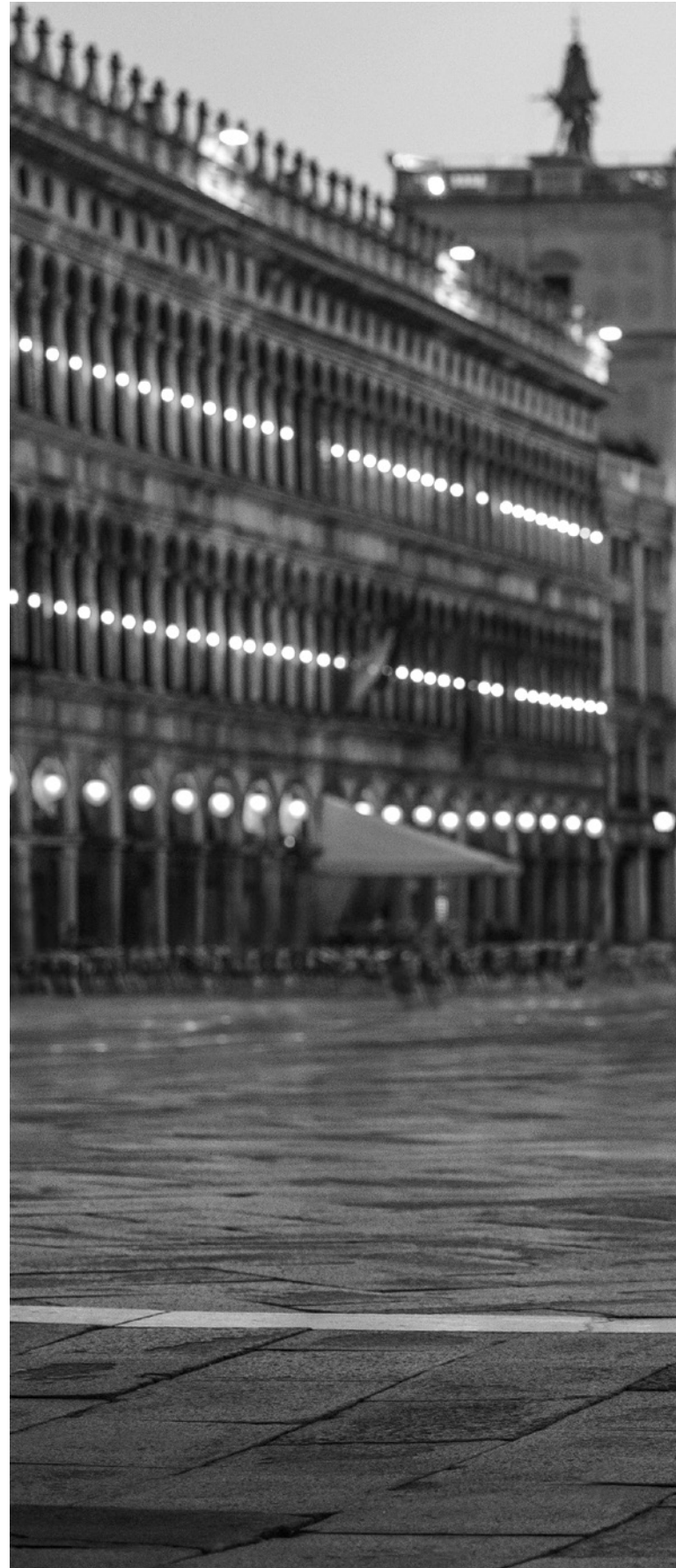
Canova is a chair with a classic clean design. Soft colours and round shapes enhance the framework material. It's a monobloc chair in polypropylene with an upholstered seat cushion for indoor or outdoor, reminding of a vintage wooden chair, but realised with a fresh and contemporary touch.



**Piazza San Marco**

55°45'47"N 12°35'57"E

Piazza San Marco is the principal public square of Venice. All other urban spaces in the city (except the Piazzetta and the Piazzale Roma) are called campi ("fields"). A remark usually attributed (though without proof) to Napoleon calls the Piazza San Marco "the drawing room of Europe".





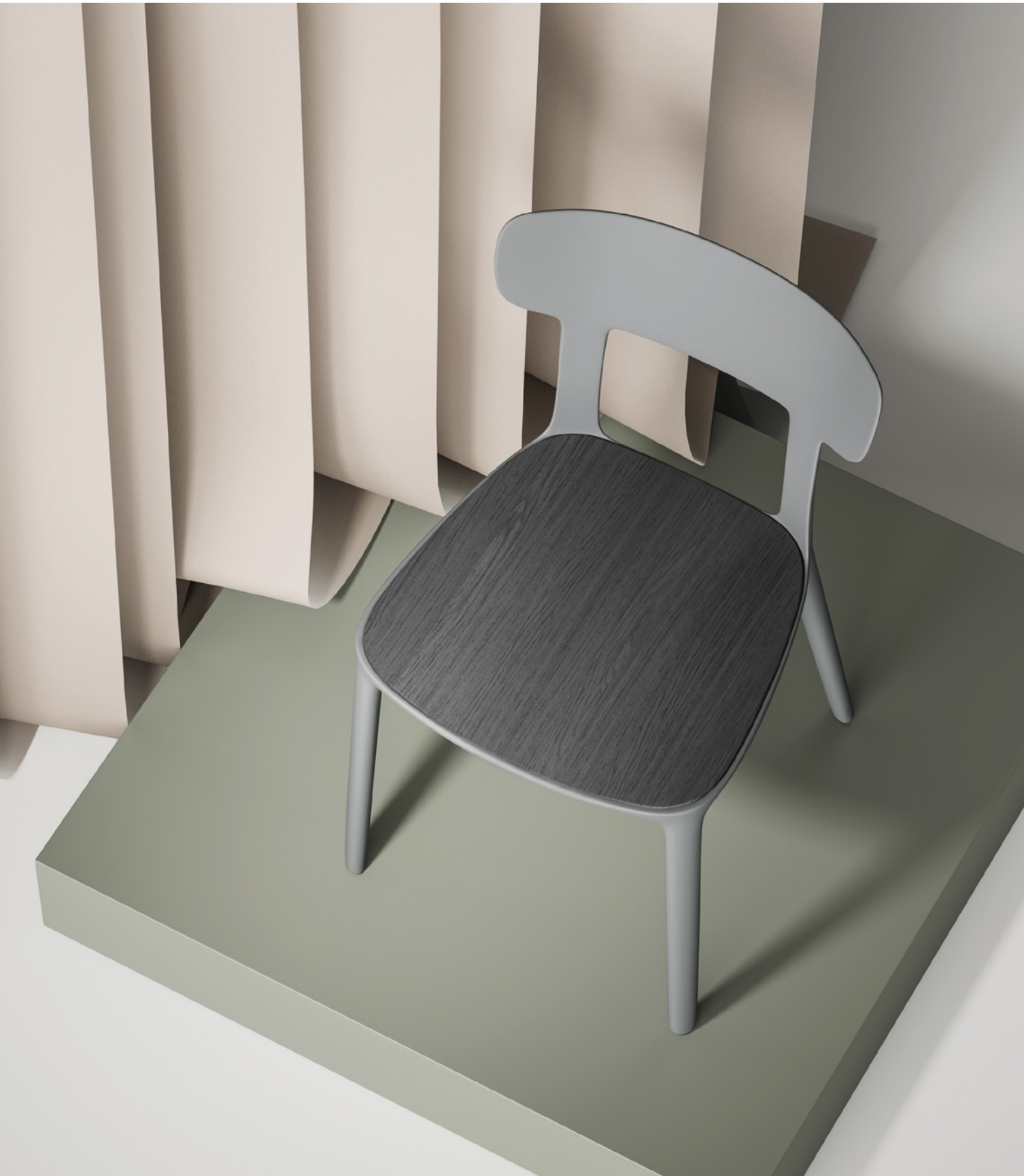




Canova wants to elevate plastic material from the way in which it's traditionally perceived.



The warmth and materiality of wood lend a cosy and traditional touch to a chair that revisits the past.





### The Skovshoved Petrol Station

55°45'47"N 12°35'57"E

The Skovshoved Petrol Station (Danish: Skovshoved Tankstation) is a historic, still-operating filling station in Skovshoved at the northern outskirts of Copenhagen, Denmark. First opened in 1936, it was designed by Arne Jacobsen and is an example of the functionalist style typical of the time.



## Nyhavn

55°45'47"N 12°35'57"E

Nyhavn was constructed by King Christian V from 1670 to 1675, dug by Swedish prisoners of war from the Dano-Swedish War 1658-1660. It is a gateway from the sea to the old inner city at Kongens Nytorv (King's Square), where ships handled cargo and fishermen's catch. It was notorious for beer, sailors, and prostitution. Danish author Hans Christian Andersen lived at Nyhavn for some 18 years.



# FELUCA

**BROGLIATOTRAVERSO**  
2019

---

[ 'felu:kə ]

The feluca (“becorn hat” in English) is an ancient headgear used in the eighteenth century and characterized by two downward curved extremities. It is no coincidence if BrogliatoTraverso has chosen this name for this new chair, since its backrest has a shape that strongly reminds of it. This particular design gives a sense of movement to its profile, erasing any rigidity and enhancing harmony and refinement.



### Montmartre

48°53'7.79"N 2°20'16.80"E

Montmartre is a large hill in Paris's 18th arrondissement. It is 130 m high and gives its name to the surrounding district, part of the Right Bank in the northern section of the city. Montmartre is primarily known for its artistic history, the white-domed Basilica of the Sacré-Cœur on its summit, and as a nightclub district.











**Feluca has this particular design that gives a sense of movement, erasing any rigidity and enhancing harmony and refinement.**



In Feluca Pop, wood gives way to polypropylene, which combined with the elliptical metal frame creates vivid contrasts.

# RUELLE

**PHILIPPE TABET**  
2018

---

[,ru:'e]

In the small alleyways of the small French country villages (the so-called “ruelles”) is typical having a seat on the traditional bistrot and brasserie chairs, which have been revisited by Philippe Tabet in a contemporary way. Ruelle won the fourth edition of the infiniti Design Context. It is a chair with a die-cast aluminium structure and extruded aluminium legs. Thanks to its shape and its features, Ruelle can be used for bars and restaurants, and also in outdoor contexts.





---

**Mexico City**

N 19° 25' 42" E 99° 07' 39"

The Zócalo (Spanish pronunciation: ['so.ka.lo]) is the common name of the main square in central Mexico City. Prior to the colonial period, it was the main ceremonial center in the Aztec city of Tenochtitlan.







Lightness and warmth collide in this indoor version, which comes also upholstered for increased comfort.





# TONDINA

**FAVARETTO&PARTNERS**  
2015

---

[ton'dina]

Inspired by Nordic design, but with a design reminiscent of soft, delicate forms, the Tondina family consists of a rounded seat and backrest supported by a slim frame. There is no place where it does not fit in, and the wide range of versions available makes it a passe par tout for any interior context.











### Mabu Vinyl

33°55'32"S 18°25'23"E

Based in Cape Town since 2000. We buy, sell, and trade most kinds of vinyl – vintage and new. Also CD's, tapes, comics, and music-related DVD's and books.



**Tondina Pop** has seat and back in a wide range of polypropylene colors, which can be easily matched with many frame finishes. The result will always be a versatile and elegant chair, suitable for bar, restaurants, bistros or dining rooms.



**Tondina Slim is the latest addition to the Tondina family is distinguished by an unmistakable openwork texture, which recalls the traditional weave of the 1950s reinterpreted in a more contemporary version.**








**Varanasi**

25.3176° N, 82.9739° E

Varanasi, also called Benares, Banaras, or Kashi City, is located on the left bank of the Ganges River and is one of the seven sacred cities of Hinduism. It is one of the oldest continuously inhabited cities in the world.







---

**Delicate and irregular wood grains characterise the Tondina collection in plywood, the first born of the family. Stools, chairs and the Lounge armchair add a touch of cosy elegance to the room.**

# SICLA

**CLAUS BREINHOLT**  
2019

---

[ 'sikla ]

Formal neatness, several basis available and great lightness: this is Sicla, a chair made of a lightweight and comfortable monocoque. A rib inserted on the back of the chair provides extreme stability to the backrest. The seat can be entirely upholstered or only provided with a seat panel.



---

## Nove

45°44'N 11°41'E

Nove is a town in the province of Vicenza in the region of Veneto, north-eastern Italy, with just over 5,000 inhabitants. It is located on the Brenta river, near Marostica and Bassano del Grappa. The town is home of a local network of ceramic industries. The name of the town comes from the antique Italian nove, in the meaning of "new". As matter of fact, the lands where the town is located were considered new because of the lowering of the level of the Brenta. The lowering of the river revealed soft lands rich of clay. The first artisans of the area started using the clay for the production of pottery.











The colours of the polypropylene shell create a subtle play of light and shadow with the rib and armrests, showing all its stability in its lightness.



# RELIEF

**FAVARETTO&PARTNERS**  
2019

---

[rə'li:f]

Relief is a polypropylene monocoque chair collection, characterized by soft and comfortable lines. The shell has two high reliefs in different finishes, that recall virtual cushions on the seat and on the backrest, emphasizing the minimal but not trivial form. From this technical detail derives the name Relief.







The chair has a polypropylene shell, which is assembled on different bases. Three versions are available: plastic, with upholstered seat or fully upholstered.



The ergonomics of the shell  
make Relief perfect as a work,  
meeting or conference chair.

# PURE LOOP M O N O

**CLAUS BREINHOLT**  
2017

---

[ˈpjʊər ˈlu:p ˈmoʊnoʊ]

The latest evolution of the Pure Loop series, 'Mono' is a shell that can be matched with any existing frame or base of the family. The shell is a coloured, recycled polypropylene monocoque which can be defined as extremely versatile. The painted steel frames make it ideal for furnishing environments including outdoor areas.







### Amsterdam

52°22'42"N 4°54'0"E

Amsterdam, capital of the Netherlands, has more than 100 kilometers (62 mi) of grachten (canals), about 90 islands and 1,500 bridges. The three main canals (Herengracht, Prinsengracht and Keizersgracht), dug in the 17th century during the Dutch Golden Age, form concentric belts around the city, known as the Grachtengordel. Alongside the main canals are 1550 monumental buildings.

## Rialto Market

45.4380°N 12.3360°E

Near the base of the landmark Rialto Bridge, the historic Rialto Market is well worth a wander. Seek it out in the early morning when it provides an authentic local experience (and awesome social-media ops), with fishmongers hawking their fresh seafood catches and local produce merchants setting out seasonal fruits and vegetables







The simple shapes of the shell and frame emphasise the Nordic inspiration of Pure Loop Mono, while retaining comfort and a sense of cosiness.

Pure Loop Mono's ideal proportions mean that it can be used in any context, without ever looking out of place.





# PURE LOOP BINUANCE

**CLAUS BREINHOLT**  
2014

---

[ 'pjʊr 'lu:p 'bɛ'nuæns ]

The Binuance develops colours, material and technology of the Pure Loop family. The sophisticated two-colour shell is obtained from a single polypropylene injection and it is available in seven tone-on-tone versions.



**Mexico City**

N19°25'42" E99°07'39"

The population of Greater Mexico City is 21,804,515, which makes it the sixth-largest metropolitan area in the world, the second-largest urban agglomeration in the Western Hemisphere and the largest Spanish-speaking city in the World.









The contrast of the two colours of the shell can be emphasised by the wooden leg frame, or by the retro frame.



PURE LOOP  
MAXI

**CLAUS BREINHOLT**  
2017

---

[ˈpjʊr ˈlu:p ˈmæksi]

The Pure Loop family introduces a new “Maxi” version:  
an enlarged shell upholstered in leather or fabric.



PURE LOOP MAXI





**The simplicity of the shapes  
and the friendly form  
demonstrate the formal purity  
of the design from which it took  
its inspiration.**

# PURE LOOP LOUNGE

**CLAUS BREINHOLT**  
2015

---

[ˈpjʊr ˈlu:p ˈlaʊndʒ]

Pure Loop Lounge is an armchair with a cozy and ergonomic shape, with a polyurethane padded seat panel, and it's completely upholstered. Functionality and comfort are guaranteed.







**The 4-star base is perfect for offices, lounges and waiting areas.**





### Sādhu and Sādhvī

Literally, it means one who practises a "sadhana" or keenly follows a path of spiritual discipline. The sādhu is solely dedicated to achieving mokṣa (liberation from the cycle of death and rebirth), through meditation and contemplation of Brahman.



The Sanskrit terms sādhu ("good man") and sādvi ("good woman") refer to renouncers who have chosen to live lives apart from or on the edges of society to focus on their own spiritual practices.





L M O O N P  
M O N O

**CLAUS BREINHOLT**  
2020

---

[ˈlu:p ˈmoʊnoʊ]

Born ten years ago, and it has immediately become one of the Infiniti best sellers, Loop is a sinuous icon capable of making any public or private environment elegant. The polycarbonate shell gives now way to a recycled polypropylene version, made even thinner and lighter than before.





**Johannesburg**

26°12'16"S 28°2'44"E

Johannesburg, informally known as Jozi, Joburg, or "The City of Gold", is the largest city in South Africa, classified as a megacity, and is one of the 100 largest urban areas in the world.





## New York City

40°42'46"N 74°0'22"W

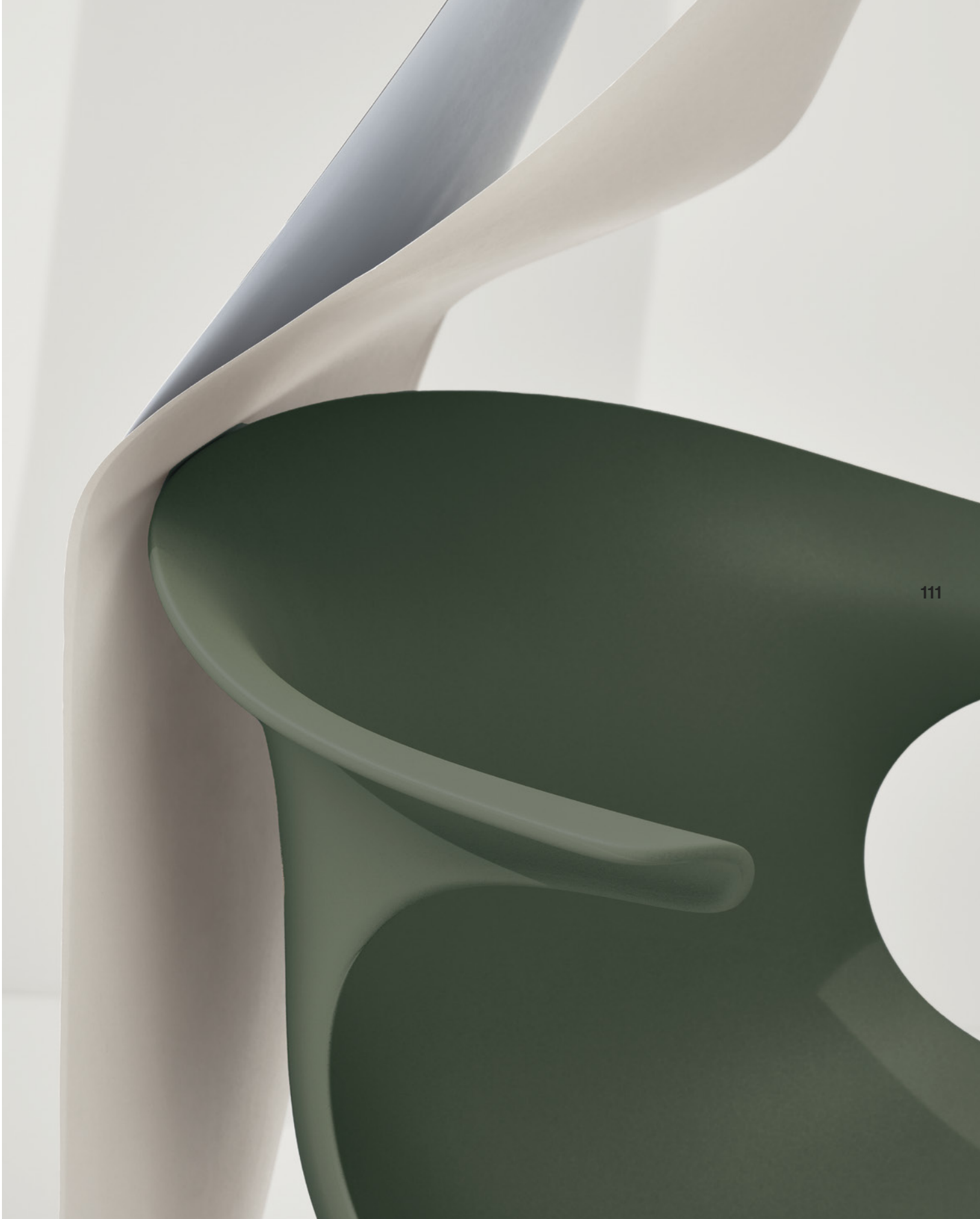
New York, often called New York City (NYC) to distinguish it from the state of New York, is the most populous city in the United States. New York City is also the most densely populated major city in the United States. Located at the southern tip of the state of New York, the city is the center of the New York metropolitan area, the largest metropolitan area in the world by urban area.



110



The ergonomic armrests have a new size, but maintaining the typical curvature, which has made this chair unique for its kind. Loop Mono in polypropylene, which is added to the classic wooden version, takes on a pop, fresh and modern connotation.



LOOP 3D  
WOOD

**CLAUS BREINHOLT**  
2008

[ˈlu:p ˈwʊd]

The first legendary family created by Claus Breinholt and the first one-piece shell in the world with arms in 3D curved wood. Loop Wood can be said to be the predecessor of a large extended family, which includes the polypropylene version, the "Pure" version, with the shell without armrests, and the "Mini" version, with the shell reduced to a minimalist version. This piece of art, with its unique shape, can be recognised everywhere by its design, which remains contemporary even with the passage of time.





**Berlin**

52°31'12"N 13°24'18"E

Berlin is the capital and largest city of Germany by both area and population. Its 3.7 million inhabitants make it the European Union's most populous city, according to population within city limits. One of Germany's sixteen constituent states, Berlin is surrounded by the State of Brandenburg and contiguous with Potsdam, Brandenburg's capital. Berlin's urban area, which has a population of around 4.5 million, is the second most populous urban area in Germany after the Ruhr. The Berlin-Brandenburg capital region has around 6.2 million inhabitants and is Germany's third-largest metropolitan region after the Rhine-Ruhr and Rhine-Main regions. There has been an unsuccessful attempt to unify both states in 1996 and the states cooperate on many matters to this day.











The wooden shell can be combined with numerous bases, and will furnish the room with personality and character.





# COOKIE

**MARCELLO ZILIANI**  
2013

---

[ 'kʊki ]

Cookie is a comfortable and refined chair, composed of a polypropylene shell combined with different bases, to be chosen according to one's needs. The intriguing, sinuous and essential design of the shell is unmistakable, and the ergonomic shape gives a welcoming feeling.



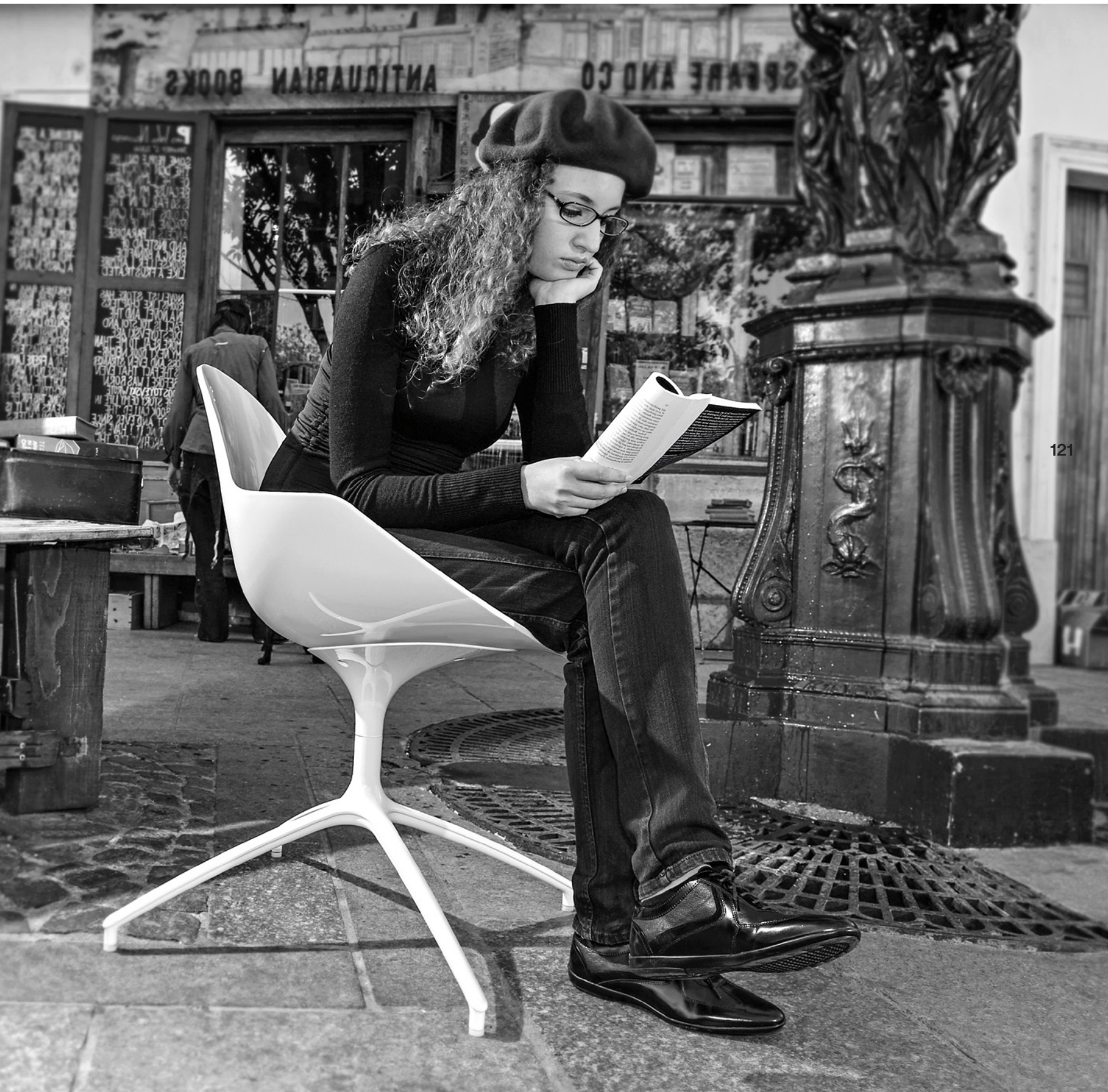
### Shakespeare and Company

N 48°51'15" E 2°20'83"

Shakespeare and Company is an iconic English-language bookstore opened in 1951 by George Whitman, located on Paris's Left Bank. The store was named after Sylvia Beach's bookstore of the same name founded in 1919 on the Left Bank, which closed in 1941. Whitman adopted the "Shakespeare and Company" name for his store in 1964. The bookstore is situated at 37 rue de la Bûcherie, in the 5th arrondissement. Opened in 1951 by American George Whitman, it was originally called "Le Mistral", but was renamed to "Shakespeare and Company" in 1964 in tribute to Sylvia Beach's store and on the 400th anniversary of William Shakespeare's birth.











---

The harmony of Cookie is reflected in the shape of the shell, which also incorporates the armrests. comfort is amplified in the upholstered version, in fabric or leather.

# N E X T

**ANDREAS OSTWALD**  
2013

---

**['nekst]**

Plastic, steel and wood: three materials in one sophisticated product, winner of the Good Design Award in 2014. Next finds its ideal place in a modern, minimalist environment. The solid Iroko wood structure and a perforated shell make it a robust chair, suitable also for outdoor areas.





### Ring corner

In boxing, each fighter is given a corner of the ring where he rests in between rounds for 1 minute and where his trainers stand. Typically, three men stand in the corner besides the boxer himself; these are the trainer, the assistant trainer and the cutman. The trainer and assistant typically give advice to the boxer on what he is doing wrong as well as encouraging him if he is losing. The cutman is a cutaneous doctor responsible for keeping the boxer's face and eyes free of cuts, blood and excessive swelling.











---

The combination of three elements, so different yet complementary, creates plays of light that emphasise the uniqueness of a chair that knows how to stand out.



# EASTWOOD

**ANDREAS OSTWALD**  
2019

---

[ 'i:st 'wɔd ]

In the new Eastwood chair, a solid ash structure meets the polypropylene, creating an intriguing intersection of sinuous lines. The slightly curved back panel rests gently on the frame, which is realised in natural or black stained ash, maximizing the comfort. The color palette for the seat and backrest makes Eastwood matchable to any classic and modern setting.



### Orecchiette

Bari's cuisine is based on three typical agricultural products found within the surrounding region of Apulia, namely wheat, olive oil and wine. The local cuisine is also enriched by the wide variety of fruit and vegetables produced locally. Local flour is used in homemade bread and pasta production including, most notably, the famous orecchiette ear-shaped pasta, recchietelle or strascinate, chiancarelle (orecchiette of different sizes) and cavatelli.











The colour of the seat and back is also present in the frame, with an oval detail that does not go unnoticed and adds a fun touch to the chair.



S E T T E  
S U  
S E T T E

**BROGLIATOTRAVERSO**  
2016

---

[ 'sette 'su 'sette ]

The strength and beauty of Settesusette is the formal continuity of the wood of the frame and the polypropylene of the backrest and seat. The elegant and harmonious composition of these two materials, so different yet so wonderfully united, let Settesusette become a must-have that fits perfectly into any expressive style.





### Holland Windmills

Windmills are an iconic part of the Dutch landscape, and a visit to one is a must for visitors to the Netherlands. And with eight windmills located in and around Amsterdam, windmill spotting is a great way to see the city.







The chair has a clean design, which can be fully appreciated on the back of the product. Settesusette is suitable both for domestic and for contract environments and the sophisticated combinations of colours make it fitting properly in interiors with a vintage style.



141



# PORTA VENEZIA

**DORIGO DESIGN**  
2012

---

[ 'porta ve 'nɛttsja ]

The combination of different materials, such as plastic and wood, creates Porta Venezia, a collection of chairs and stools that suggests lightness and comfort. The chromatic matches available give Porta Venezia a vibrant twist, giving it a place in kitchens with a contemporary design, but also in bars and cafeterias that are looking for an unconventional solution to accommodate their guests.









## Sumo

Sumo is a form of competitive full-contact wrestling where a rikishi (wrestler) attempts to force his opponent out of a circular ring (dohyō) or into touching the ground with any body part other than the soles of his feet (usually by throwing, shoving or pushing him down).



The concept of this chair, originally designed to be used in bars and cafes, has been revised to make it fitting in dining rooms with a pop style.





**E K K I**

**MC.DSG**  
2019

---

**[ 'ɛkki ]**

mC.dsg wants to pay homage to the early Twentieth century designers with Ekki, a chair with a retrò design. It is enriched by contemporary elements, such as the metal beams placed on the back side of the rectangular backrest, and the visible assembly components.







### Paris Métro

The Paris Métro is a rapid transit system in the Paris metropolitan area, France. A symbol of the city, it is known for its density within the capital's territorial limits, uniform architecture and unique entrances influenced by Art Nouveau. It is mostly underground and 225 kilometres long.

## Basilica of the Sacred Heart

48°53'12"N 2°20'35"E

The Basilica of the Sacred Heart of Paris is a Roman Catholic church and minor basilica in Paris, dedicated to the Sacred Heart of Jesus. Sacré-Cœur Basilica is located at the summit of the butte Montmartre, the highest point in the city. It is a popular landmark, and the second-most visited monument in Paris. The basilica was designed by Paul Abadie: construction began in 1875 and was completed in 1914.





The wooden seat and backrest are wide and spacious, the frame is square but harmonious. The colour contrast is reminiscent of chairs of the past, with a gentle reference to the Nordic models of the 20th century.







154

# HARMO

**BROGLIATOTRAVERSO**  
2017

---

[ 'ha:rmo ]

Harmo picks up on the tradition of wooden chairs, while retaining the comfort and conviviality provided by the chair's rounded shape. The massive yet delicate profile seems to delicately support the backrest and seat, and invites you to sit down.



## Great Wall of China

40.68°N 117.23°E

The Great Wall of China is a series of fortifications that were built across the historical northern borders of ancient Chinese states and Imperial China as protection against various nomadic groups from the Eurasian Steppe. The best-known sections of the wall were built by the Ming dynasty (1368–1644). Apart from defense, other purposes of the Great Wall have included border controls, allowing the imposition of duties on goods transported along the Silk Road, and the control of immigration and emigration.











The imperceptible joint between  
frame and backrest is an  
unmistakable design feature of  
BrogliatoTraverso.

# WOODSTOCK

**KAI STANIA**  
2017

---

[ 'wʊd ,stɑ:k ]

Woodstock is a chair entirely realised in plywood oak. It has a minimal design with a rock edge and it is designed to be easily stacked. Perfect for a company use, it can be provided with a linking device that allows to arrange it in rows: a fantastic solution for conference rooms.







Lightweight, comfortable,  
highly stackable: Woodstock  
is designed to be used in  
environments where sharing is  
a must.



# SEAME

**KLAUS NOLTING**  
2014

---

[se'ame]

Light as a feather, yet stable and with an unmistakable design: the Seame family concentrates all Infiniti's know-how in woodworking. The body, made from delicate yet distinctively grained wood panels, is curvaceous and measured, and its contours at the back define the shape and elegantly shape it.









**Padrão dos Descobrimentos**

38°41'36.98"N 9°12'20.59"W

Padrão dos Descobrimentos is a monument on the northern bank of the Tagus River estuary, in the civil parish of Santa Maria de Belém, Lisbon. Located along the river where ships departed to explore and trade with India and the Orient, the monument celebrates the Portuguese Age of Discovery (or "Age of Exploration") during the 15th and 16th centuries.



**Seame is 100% green, it is perfect for Scandinavian style environments with modern neutral and cold tones. Designed for residential settings, Seame is also suitable for contract use in libraries, reading areas and public spaces.**







# BI

**MARC SADLER**  
2014

---

[ 'bi ]

Marc Sadler, with this project, has developed a “platform” product, on which he has inserted an element of discontinuity, providing this chair an “ironic character”. In this way, Bi suits into any kind of space: residential spaces or waiting rooms, modern environments or urban settings. The comfortable, high-performance base has been paired with a light polycarbonate or wood backrest. Bi 20s is the latest striking creation becoming part of the Bi family.





ESCULTOR LAGOA HENRIQUES





## Lisbon

38°43'31"N 9°09'00"W

Lisbon is the capital and the largest city of Portugal. The westernmost portions of its metro area, the Portuguese Riviera, form the westernmost point of Continental Europe, culminating at Cabo da Roca. Lisbon is one of the oldest cities in the world, and the second-oldest European capital city (after Athens), predating other modern European capitals by centuries.





Circles and square lines take centre stage, the softness of the seat and back can be felt, the elegance is undeniable.



# ÚTI

176

**MC.DSG**  
2018

---

[ 'uti ]

“Úti” is the Icelandic word that expresses the French concept of “en plein air”. With this chair, infiniti gives a new, nordic and minimal direction to the outdoor furniture, overcoming the common Mediterranean-inspired dehors concept. Úti is a chair with a structure manufactured in painted steel rod, available with or without arms.





**Ideal for outdoor use, it is also possible to add an upholstered panel to the seat for added comfort.**





# FIIORELLINA

**FABRIZIO BATONI**  
2013

---

[fjorel'lina]

Lightweight and practical, this chair is characterised by a considerable manufacturing complexity. In fact, it is based on a technology that allows obtaining, from a single mould, four different versions of the product: with solid or with perforated backrest and, both versions, with or without arms.



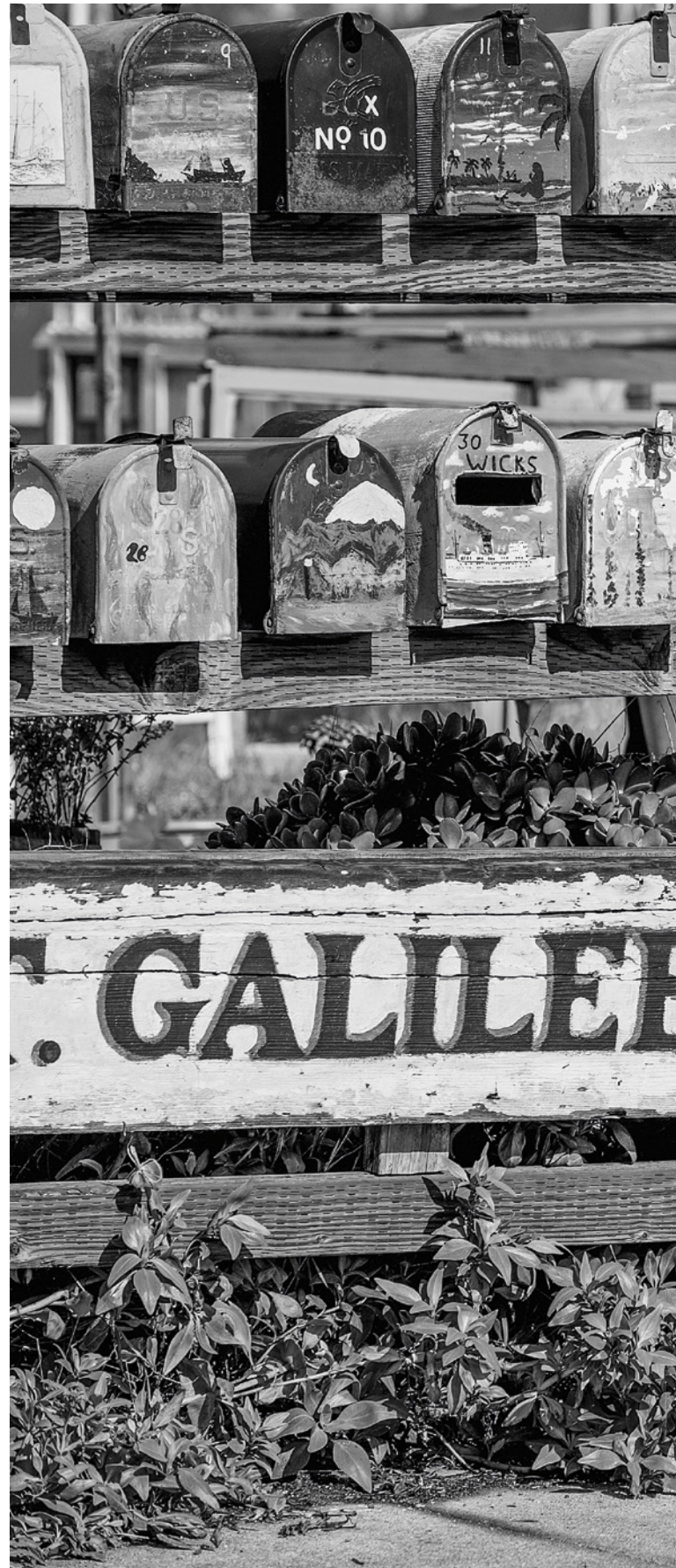


**Napa St. Galilee Harbor  
Sausalito, CA 94965,  
Stati Uniti**

37°51'33"N 122°29'07"W

Galilee is a fishing village on Point Judith within the town of Narragansett, Rhode Island, USA, and is notable for being home to the largest fishing fleet in Rhode Island and for being the site of the Block Island Ferry. The village is directly across the harbor from Jerusalem, Rhode Island. Galilee, Rhode Island is named after the Biblical Galilee, which was the original home region of Jesus Christ, who grew up in Nazareth, a village in the Galilee region of Israel on the Sea of Galilee. Four of Jesus' disciples, Andrew, Peter, James and John, were fishermen from Galilee.

182







18





---

**Fiorellina suits well for contract uses, as well as for outdoor uses and summer settings ones.**



# D R O P

**RADICE ORLANDINI**  
2011

---

[ 'dra:p ]

Awarded with the Good Design Award in 2011, Drop is a chair for contract settings, with a playful design and available in a wide range of colours. It is the ideal synthesis of the dynamic and essential style of the infiniti collection. It provides lightness and irony to public spaces, like bars, pubs, and restaurants. This design product is 100% recyclable.





**Miami**

25°47'16"N 80°13'27"W

Romero Britto (born October 6, 1963) is a Brazilian artist, painter, serigrapher, and sculptor. He combines elements of cubism, pop art, and graffiti painting in his work, using vibrant colors and bold patterns as a visual expression of hope, dreams, and happiness.



## Surfing in Australia

Australia is renowned as one of the world's premier surfing destinations. Surfing underpins an important part of the Australian coastal fabric. It forms part of a lifestyle in which millions participate and which millions more have an interest. Surfing Australia is the national sporting body which guides and promotes the development of surfing.





Thanks to the hole in the seat, Drop is perfect for use outdoors and in the sun, easy to transport and stackable.



# KRAM

**THOMAS PEDERSEN**  
2018

---

[ 'kræm ]

Inspired by an open seashell, Kram is inviting and welcoming the user to enjoying great comfort. It is a plywood lounge chair that rests on a steel or wooden three-legged frame. For a fitting of unparalleled elegance, Kram is also available upholstered.







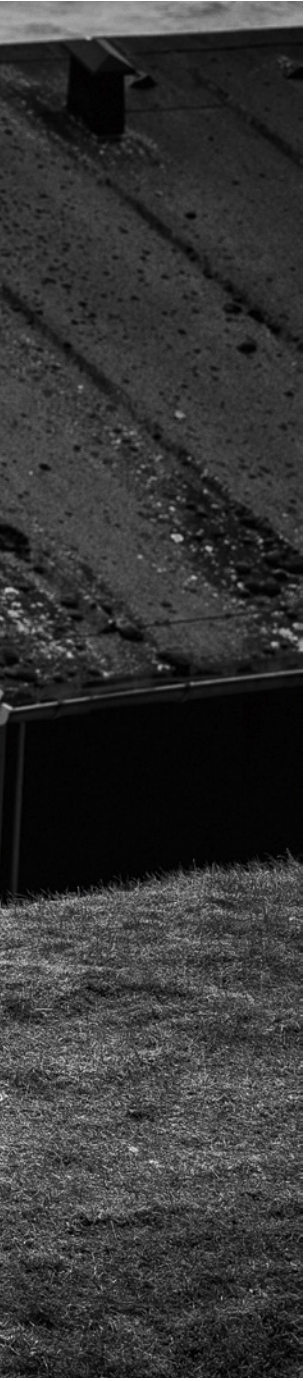
194

## Aarhus

56°09'N 10°13'E

Aarhus is the second-largest city in Denmark and the seat of Aarhus municipality. The largest city in Jutland, Aarhus anchors the Central Denmark Region.





## United States Capitol

38°53'23"N 77°00'32"W

The United States Capitol, often called The Capitol or the Capitol Building, is the meeting place of the United States Congress and the seat of the legislative branch of the U.S. federal government. It is located on Capitol Hill at the eastern end of the National Mall in Washington, D.C. Though no longer at the geographic center of the federal district, the Capitol forms the origin point for the district's street-numbering system and the district's four quadrants.





The minimalist frame with strong lines supports curves and waves, and the warmth of veined wood. The structure of Kram invites you to sit down and relax.



197



**B O M B O M**

**FAVARETTO&PARTNERS**  
2019

---

**[ 'bɒmbɒm ]**

Its name evokes only good feelings: softness, smoothness, fluffiness. These are the features that everyone expects from an armchair and that BomBom is able to provide. The enveloping frame provides BomBom stability and elegance.





the soft cold foam padding  
can be upholstered in two  
colours, for inside and outside.  
The choice of combinations  
will bring out the uniqueness  
of BomBom in waiting rooms,  
executive lounges and hotels.





### Pigalle Duperré

48°52'55.8"N 2°20'14.2"E

The Pigalle Duperré is sandwiched into a row of buildings in the 9th arrondissement of Paris. Ill-Studio and Pigalle have returned to a basketball court they previously overhauled with bold patterns, replacing primary colours with gradients of blue, pink, purple and orange. The Pigalle Duperré is sandwiched into a row of buildings in the 9th arrondissement of Paris.







# PEB

**BROGLIATOTRAVERSO**  
2018

---

[ 'peb ]

Peb is an armchair that can be transformed and adapted to numerous contexts, thanks to the possibility of combining it with wooden legs or a metal frame, of choosing between two backrest heights and of upholstering it in different colours. The result will always be unique, and Peb will be able to accommodate you with all its rounded softness.









**Designed to give personality to contract areas, waiting rooms and meeting rooms, Peb plays with the interpenetration of rounded elements, reminiscent of an embrace.**



# DEMOISELLE

**QUAGLIO SIMONELLI**  
2017

---

[demwa: 'zel]

Quaglio Simonelli designers present an elegant armchair characterised by soft lines and a structure covered with double ton-on-ton upholstery, tied with a sophisticated leather belt. The comfort is ensured by a deep seat and a large cushion.











### Rickshaw

A rickshaw originally denoted a two- or three-wheeled passenger cart, now known as a pulled rickshaw, which is generally pulled by one person carrying one passenger. The first known use of the term was in 1879. Pulled rickshaws created a popular form of transportation, and a source of employment for male labourers, within Asian cities in the 19th century.



---

The structure is in expanded polyurethane and the seat and the cushion are in cold-foamed polyurethane, upholstered in leather, eco-leather or fabric. Demoiselle stands on four matt painted steel legs. The choice of outdoor upholstery makes this sofa a product suitable for any context.



# CALLITA

**ANDREAS OSTWALD**  
2012

---

**[kal' lita]**

A classic from infiniti: Callita. It is a chair with a design that recalls the sinuous lines of the Japanese calligraphy ideograms. The uniqueness of its forms gives it a minimalist and modern touch, but always with an eye on the ancient art from which it draws its inspiration.





## Machiya

Machiya are traditional wooden townhouses found throughout Japan and typified in the historical capital of Kyoto. Machiya (townhouses) and nōka (farm dwellings) constitute the two categories of Japanese vernacular architecture known as minka (folk dwellings).





## Shodō

Japanese calligraphy is a form of calligraphy, or artistic writing, of the Japanese language. For a long time, the most esteemed calligrapher in Japan had been Wang Xizhi, a Chinese calligrapher from the 4th century, but after the invention of Hiragana and Katakana, the Japanese unique syllabaries, the distinctive Japanese writing system developed and calligraphers produced styles intrinsic to Japan.







**Callita looks like a monobloc, born from the sketch of a pen that created games of curves, of full and empty, of suspension and attachment.**



220

# P I N U P

**MARCELLO ZILIANI**  
2010

---

[pɪn 'ʌp]

Pin Up is one of infiniti's iconic chairs, and its shape is inspired by the Pin Ups of the 1950s. The futuristic polyurethane or upholstered shell shapes float around a base, leaving a mark and an aura of sensuality.





### La Défense Paris

48°51'24"N 2°21'08"E

La Défense is a major business district located three kilometres west of the city limits of Paris. It is part of the Paris metropolitan area in the Île-de-France region, located in the department of Hauts-de-Seine in the communes of Courbevoie, La Garenne-Colombes, Nanterre, and Puteaux.









The curved shape intensifies the comfort of the seat, which follows the lines of the body that sits on it.



**K L E J N**

**THOMAS PEDERSEN**  
2018

---

**[ 'klein ]**

Klejn has been created with lightness and simplicity: a minimal design stool, inspired by structures such as cranes and ships of the seaport surrounding Aarhus. It is a slim and light stool in rod steel, equipped with a polypropylene seat available in three heights. Its structure can be painted, which makes Klejn suiting well for outdoors environments.











### **Grisk Devil Ink Tattoo**

56°09'23"N 10°12'35"E

Gallery Grisk derives from the creative community Grisk, founded by artist Peter Birk. His idea for Grisk was to start a place where creativity could flourish and where any expression of creativity was welcome: you can find street artist, designer, tattoo artist, photographer and videomaker that work together.



230



With its plastic seat, Klejn is colourful and contemporary; its minimalism adds a pop nuance and will add a point of light to the room.



# F L I N K

**THOMAS PEDERSEN**  
2018

---

[ 'flɪŋk ]

A soft and futuristic stool, inspired by the stones found at the beach, which over time have been slowly polished and transformed into pebbles with rounded “friendly” shapes. For this reason, the stool is called Flink, a word that in Danish means “Friendly”. Flink consists of a structure with a round steel base, an aluminum support, and a seat upholstered with a wide choice of fabrics.



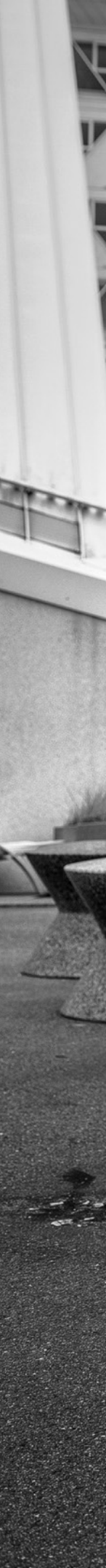


---

### The Iceberg

55°45'47"N 12°35'57"E

Isbjerget (Lit.: The Iceberg) is a residential building in the Aarhus Docklands neighborhood in Aarhus, Denmark. It is situated on the waterfront on Mariane Thomsens Gade and was finished in 2013 after three years of development. The building was designed by four architectural firms, the Danish CEBRA and JDS Architects, French Louis Paillard and Dutch SeARCH, and was funded by the Danish pension fund PensionDanmark.







In the bar or kitchen version, the footrest becomes a comfortable support and increases comfort; in the Low version, Flink is an intelligent and space-saving choice for bars and restaurants that want to make the best use of space.







238

F L I N K  
W O O D

**THOMAS PEDERSEN**  
2018

---

[ˈflɪŋk ˈwɔd]

The iconic infinity stool, which reminds of the smooth stones of the beaches of the Northern Europe, adds to the range of products a new version with a solid wood seat in black or natural stained ash, which guarantees formal cleanliness and a distinctly Scandinavian style. It is available in three different heights.



240



The wooden seat, curved and polished for greater comfort, ennobles the minimalist structure and accentuates the Nordic design of the structure.



241



# PURE LOOP MINI

**CLAUS BREINHOLT**  
2014

---

[ˈpjʊr ˈlu:p ˈmɪni]

The “Pure Loop” shell becomes “Mini”, assembled on different types of stool frames. All versions feature a polypropylene shell, which, combined with a painted steel frame, is ideal for outdoor areas. Pure Loop Mini is an intelligent solution for combining sophistication and ergonomics.



PURE LOOP MINI









### Yogis Barbershop Cape Town

33°55'31"S 18°25'26"E

Yogi is the 4th generation of his family to cut Capetonians hair; he even has a photo in his shop of an elderly gentleman who has had his haircut by 3 of those generations. "Back then the barber shop was the perfect place to catch up on gossip, now its all about making connections and networking." - Yogi





The curvaceousness of the Mini shell is enhanced by the Dandy frame, which, while maintaining simple and essential lines, adds character to this stool.



# PICAPAU

**RADICE ORLANDINI**  
2013

---

[ˈpaikəpɔu]

Triangular, colourful, unconventional; Picapau breaks the mould and stands out from the crowd. It is a stool with a polypropylene seat and footrest, resting on solid beech legs. Available in three heights and various colours, it is the perfect choice for contract environments.



PICAPAU









### Cable car

The San Francisco cable car system is the world's last manually operated cable car system and an icon of the city of San Francisco. The system forms part of the intermodal urban transport network operated by the San Francisco Municipal Railway. They are among the most significant tourist attractions in the city, along with Alcatraz Island, the Golden Gate Bridge, and Fisherman's Wharf. San Francisco's cable cars are listed on the National Register of Historic Places and are designated as a National Historic Landmark.

252



**For classic settings, a solution with a seat and legs in the same colour can be chosen, while the contrasting solution is well suited to young and dynamic locations.**



253



254

**B O B O**

**FABRIZIO BATONI**  
2013

---

**[ 'boboʊ ]**

Bobo is a stool composed of a polypropylene seat and a steel frame, which can be chromium-plated or embossed of the same colour of the seat. It is available in kitchen and bar heights. It can be used as a complement in a modern living room or as a functional element in sophisticated rustic interior: Bobo gives character to any environment, as it combines simplicity and ergonomics.



---

### **Academic Theatre of Castelfranco Veneto**

45°40'N 11°56'E

Designed in 1746 by the architect Francesco Maria Preti of Castelfranco Veneto (1701-1774), commissioned by the Society of the Academicians and, in particular, by Jacopo and Giordano Riccati, it was built, according to Preti's project, between 1754 and 1780, with the exception of the façade and the atrium, added between 1853 and 1858 to designs by the engineer Antonio Barea of Castelfranco. The architectural originality of the theatre lies in its dual function as a theatre hall for shows and musical performances at night and as a hall for daytime meetings of the Academicians.







---

**With its vaguely industrial look, Bobo is well suited to any interior design project. Despite its generous shape, it is a lightweight stool with a versatile design.**

# RECORD BENCH

**MC.DSG**  
2018

---

[rə'kɔ:rd 'bentʃ]

Record Bench, like the rest of the Record family, was born from the idea that are the crossed lines themselves that support the top of the bench. The bench is made up of a simple structure in painted steel, which can be realised in different materials, both for an outdoor and an indoor use.







The simplicity and harmony of the shapes that characterise it make Record Bench an extremely versatile piece of furniture.



S

Y

S

**MC.DSG**  
2020

---

[ 'SÉS ]

Sys was born as a sofa full of configurations, which gives the possibility of creating modular systems, that fit well in contexts such as waiting rooms, work spaces, museums, restaurants, schools, shops and meeting and sharing areas. Thanks to an extremely quick and intuitive fastening system, it is possible to disassemble, move and reconfigure your sofa, according to the needs of that moment.









**Sys is made up of a painted steel frame, which creates an housing for the modules to be inserted.**





infiniti

# TABLES

[tei·blz]



# LANDING

**BROGLIATOTRAVERSO**  
2018

---

[ 'lændɪŋ ]

An iconic table: Landing is the compositive synthesis between lightness and solidity. The horizontality of the large top rests on the tip of the pyramidal base, in a magical balance that makes it a unique piece of its kind. Landing is a table with clean lines, that makes purity and semplicity the distinctive features of a timeless design archetype.



272



The sculptural presence and the wide free space under the top make Landing a unique piece in domestic environments, business premises and meeting rooms.



273



# VERSABLE

**ROBIN RIZZINI**  
2020

---

[ 'vɜːsəbəl ]

A linear table, with clean and delicate shapes. Hence, the idea of creating a versatile piece of furniture. The idea behind Versable was to design a table with a simple and essential aesthetic, light and robust at the same time, able to conceal the central function of the table, but gradually revealing it.



infiniti

276



---

**The Versable family includes fixed and extendable models, available in several sizes, in order to allow a full answer to the needs of the contemporary environments.**



# NEXT TABLE

**ANDREAS OSTWALD**  
2016

---

[ˈnekst ˈteɪbəl]

Round, square, Maxi; the Next table, in its simplicity, has the ideal solution for every project. Created to accompany the chair of the same name, it also finds its expression when combined with other models, thanks to its simple and intuitive design. It is possible to have it all in solid oak, with a top in fenix or laminate.



NEXT TABLE

infiniti

280





---

The ideal table as a desk, for dining rooms, or to create a long coworking table: Next Maxi will fulfil every requirement.



# RECORD LIVING

**MC.DSG**  
2018

---

[rə'kɔ:rd 'lɪvɪŋ]

Record is an innovative design table, which combines style and versatility through the combination of simple lines. Legs and footrest intersect without screws, giving an impressive and appealing touch to the details. The table top is available in a wide range of dimensions and finishes, that is why it fits well both in domestic and in contract environments.



The oval version of Record living shows all the elegance of its lines. The monochrome version, then, is chosen for a striking look.







# RECORD MEETING

**MC.DSG**  
2019

---

[rə'kɔ:rd 'mi:tɪŋ]

In addition to the more domestic version, there is also a version for meetings, conferences and workplaces. Record Meeting is spacious, practical, light, and easy to combine with stools or chairs, and its generous shape is perfect for sharing.



infiniti

288



**Record meeting is available in two lengths, and it is possible to choose the top in different materials according to requirements, without affecting usability.**



# RECORD CONTRACT

**MC.DSG**  
2018

---

[rə'kɔ:rd 'kɔ:n, trækt]

Record contract is the perfect coffee table for bars, restaurants, cafeterias and meeting places. Thanks to the three heights and the numerous combinations of tops available, it is possible to have a table made to measure for the client, always characterised by the design that distinguishes the family.





**For every type of chair or armchair, there is a Record Contract table to suit: those with the smallest height, from 45 cm, are the perfect complement for lounge chairs.**



294

# RAMI

**MC.DSG**  
2020

---

[ 'rami ]

The Rami trestles allow you to create a modular and customized table, tailored to the setting and the wishes of those who choose it. Made of painted steel, the trestles revisit the classic concept of the table base in an original way, using clean and essential lines.







297

The simple and graphic design allows you to sit at the end of the table without obstacles. Depending on the number of trestles used, from 1 to 4, it is possible to combine Rami with numerous table tops of different shapes and sizes.



# DIAPASON

**FAVARETTO&PARTNERS**  
2019

---

[,daɪə'peɪzən]

Diapason is a simple and functional table, defined by a geometry that makes it fitting well into different contexts. It has a round central base and a column that recalls the acoustic instrument. The round top is available in several dimensions and finishes.



infiniti

300



---

**Diapason is a sophisticated table, but formed by simple, symmetrical lines. it is capable of standing out in any context.**



# RUELLE TABLE

**PHILIPPE TABET**  
2020

---

[,ru:'el 'teibəl]

To complete the Ruelle chair family, inspired by the ones layed outside the French bistros, infiniti presents the homonymous coffee table, with a central system that rests on a linear three-legged structure in die-cast aluminum. Ideal for bars and outdoor contexts, Ruelle tables have as an option the tip-up top, useful for solving space needs.



303

RUELLE TABLE

infiniti

304





---

Even the base, which rests on a stable tripod, is reminiscent of French brasserie tables and gives the structure a vintage feel.



# FELUCA TABLE

**BROGLIATOTRAVERSO**  
2020

---

[ 'felu:kə 'teibəl ]

In addition to the Feluca Family, a line of coffee tables with a simple and practical design is introduced. It is available in two versions with 4 legs and round top. They find their perfect location in any horeca environment.



FELUCA TABLE



**Feluca Table takes up the structure of the chair of the same name; the base, in fact, takes up the elliptical shape peculiar to this model.**



310

# F L I N K T A B L E

**THOMAS PEDERSEN**  
2019

---

[ 'flɪŋk 'teɪbəl ]

The minimalism of Flink finds the perfect expression in the new coffee table. Realised in painted steel, it is available in three heights, and it is perfect for bars, bistros and waiting areas. It is available also with an outdoor finish.







The solid, round base, like the matching stool, means that the Flink table can seat several people around it, without wasting space.























# infiniti

Via Ca' Leoncino, 2 - 31030  
Castello di Godego (TV) - Italy

T +39 0423 7616

**infinitidesign.it**

infiniti reserves the right  
to introduce any changes  
to its own models,  
without prior notice.

The printing ink cannot  
exactly reproduce  
the colours. For higher  
accuracy with suggest  
inspecting the colour  
samples.

Colour separation  
and Print  
kappadue arti grafiche  
kappadue.net



Concept and Design  
**THE TAILORS**  
thetailors.it